

HOSPITAL
FOR
**SPECIAL
SURGERY**



NEUROMUSCULAR DIRECTIONS 2010

Current Concepts in Electrodagnosis,
Neurology/Orthopaedics Interface,
and Neuromuscular Medicine

THURSDAY, FRIDAY & SATURDAY | MARCH 18 - 20, 2010

CME

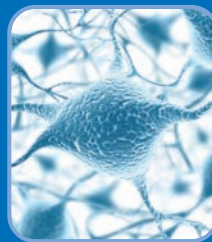
Sponsored by HSS Office of Continuing
Medical Education and Department of Neurology

ACCREDITATION

Hospital for Special Surgery designates this
educational activity for a maximum of
20 AMA PRA Category 1 Credits™.

LOCATION

Hospital for Special Surgery
New York City
www.hss.edu/cme



NEUROMUSCULAR DIRECTIONS 2010:

Current Concepts in Electrodiagnosis, Neurology/Orthopaedics Interface, and Neuromuscular Medicine

SPONSORED BY HSS OFFICE OF CONTINUING MEDICAL EDUCATION AND DEPARTMENT OF NEUROLOGY

OVERVIEW

Neuromuscular disease is a very broad term that encompasses many diseases and ailments that either directly, via intrinsic muscle pathology, or indirectly, via nerve pathology, impair the functioning of the muscles. The field of neuromuscular disease is not only advancing, but also expanding and is challenging neurologists in their day-to-day practice. This symposium will focus on broadening knowledge, competence and performance of clinicians in the specialty of neuromuscular diseases and electrodiagnosis.

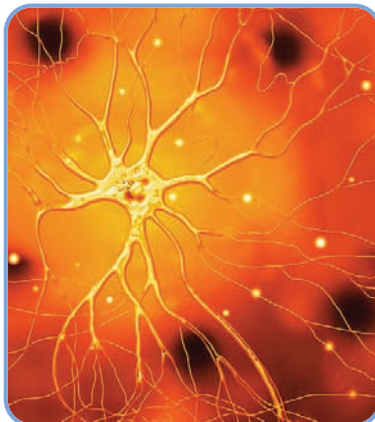
TARGET AUDIENCE

This activity is targeted at physicians working in the specialties of neurology, orthopaedics, residents and fellows.

OBJECTIVES

Hospital for Special Surgery professional education activities are intended to improve knowledge, competence and performance of our learners and to lead to better patient care. At the conclusion of the course, the participant should be able to:

- Accurately interpret clinical and electrophysiological data;
- Diagnose and treat patients with neuromuscular disease;
- Perform safe and accurate electrodiagnostic studies;
- Evaluate, diagnose and manage lumbar radiculopathy, cervical myelopathy, post operative nerve injuries, chronic inflammatory demyelinating polyneuropathy, inflammatory myopathy, brachial plexus disorders, and amyotrophic lateral sclerosis;
- Manage a modern and efficient neuromuscular medical practice.



ACCREDITATION

Hospital for Special Surgery is accredited by the Accreditation Council for Continuing Medical Education to provide continuing medical education for physicians.

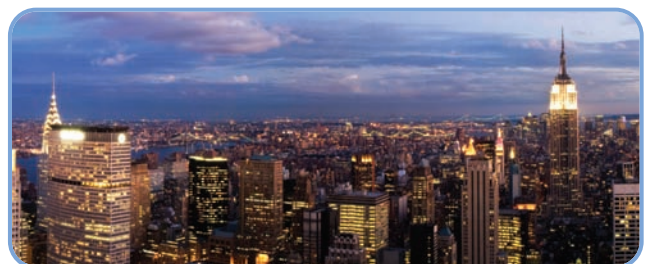
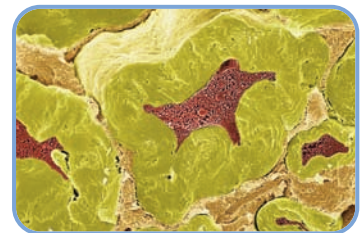
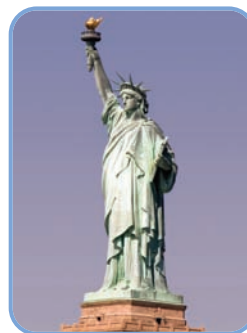
Hospital for Special Surgery designates this educational activity for a maximum of *20 AMA PRA Category 1 Credits™*. Physicians should only claim credit commensurate with the extent of their participation in the activity.

FACULTY DISCLOSURE

All faculty participating in sponsored programs must disclose to the audience any potential, apparent, or real conflict of interest related to their contribution to the activity, and any discussions of off-label or investigational uses of any commercial products or devices not yet approved in the United States. All disclosures will be made at the time of the activity. Hospital for Special Surgery activities are intended to be evidence-based and free of commercial bias. Please contact Dismayra Martinez, PA, MA, Accreditation and Compliance Coordinator at 212-606-1613 to express any concerns.

SPECIAL NEEDS

Hospital for Special Surgery is accessible for individuals with disabilities or special needs. Participants with special needs are requested to contact the Office of CME at 212.606.1812.



Program Agenda

LOCATION:

HOSPITAL FOR SPECIAL SURGERY | RICHARD L. MENSCHER EDUCATION CENTER, 2ND FLOOR
535 EAST 70TH STREET, NEW YORK CITY

THURSDAY, MARCH 18, 2010

- 8:30 am Registration and Breakfast**
- 9:00 am Welcome**
- 9:15 am Nerve Conduction Studies: Basic Concepts and Common Errors**
Dale J. Lange, MD
- 10:00 am Needle EMG: Basic Concepts and Video Demonstrations**
Teena Shetty, MD
- 10:45 am Break**
- 11:00 am Repetitive Stimulation Studies and Single Fiber EMG**
Sanjeev Nandedkar, PhD
- 12:00 pm Motor Unit Estimates: Technique and Practical Application**
Jeremy Shefner, MD
- 1:00 pm Lunch**
- 2:00 pm Case Presentations of Common and Obscure Patients Emphasizing EMG and NCV Interpretation**
Brion Reichler, MD
- 4:00 pm Electrodiagnostic Workshops: (Choose any two of the three 30-minute workshops)**
- Repetitive Stimulation and Single Fiber EMG
Sanjeev Nandedkar, PhD
 - Intraoperative Monitoring for Spinal Cord Surgery
Brion Reichler, MD
 - Routine EMG and Nerve Conduction Studies
Anita T. Wu, MD and Teena Shetty, MD
- 5:00 pm Adjourn**

FRIDAY, MARCH 19, 2010

- 8:30 am Registration and Breakfast**
- 8:45 am Welcome**
- HIP REPLACEMENT SURGERY AND ASSOCIATED NEUROLOGICAL COMPLICATIONS AND MANAGEMENT**
- 8:50 am Hip Arthroplasty, Technical Factors and Associated Complication**
Douglas E. Padgett, MD
- 9:20 am Neurological Complications and Diagnostic Evaluation**
Anita T. Wu, MD

- 10:00 am Management and Physical Therapy Post Hip Surgery Replacement**
Karen Yanelli, PT
- 10:25 am The Role of Motion/Gait Analysis Post Hip Surgery Replacement**
Sherry I. Backus, PT, DPT, MA
- 10:45 am Break**
- 11:00 am Not all Surgery-related Neuropathies are Due to Mechanical Factors: the Clinical Spectrum of Post-surgical Inflammatory Neuropathy**
P. James Dyck, MD
- 12:00 pm Lunch**

IMAGING NERVES: AN UPDATE

- 1:00 pm Role of Ultrasound in Diagnosing Neuropathies Plexopathies**
Ronald S. Adler, PhD, MD
- 1:25 pm Role of MRI in Diagnosing Peripheral Nerve Injuries and Brachial Plexopathies**
Anthony Chang, MD
- 1:55 pm CT Myelograms in Diagnosing Brachial Plexopathies**
Robert Schneider, MD
- 2:15 pm Uncommon Neuropathies in the Arm and Shoulder**
Case presentations will include long thoracic, suprascapular and spinal accessory neuropathies.
Joseph H. Feinberg, MD
- 2:55 pm Panel Discussion & Questions**
- 3:00 pm Break**
- 3:15 pm Brachial Plexopathies (diagnosis, surgical repair and post-operative management)**
- Anatomy and Live OR Demonstration
Scott W. Wolfe, MD
 - Electrodiagnostic Evaluation of Patients with Brachial Plexopathies
Joseph H. Feinberg, MD
 - Physical Exam and Pre-Surgical Evaluation of Patients with Brachial Plexopathies
Scott W. Wolfe, MD
 - Surgical Treatment
Scott W. Wolfe, MD
 - Role of Electrodiagnostic Studies Post-Brachial Plexopathy Surgery
Joseph H. Feinberg, MD
 - Occupational Therapy for Muscle Re-education
Alexandra Mackenzie, OT

- 5:00 pm Questions and Answers**
- 5:30 pm Adjourn**

SATURDAY, MARCH 20, 2010

- 8:00 am Registration and Breakfast**
- 8:25 am Welcome**
- 8:30 am Adult Onset Acid Maltase Disease: Clinical Spectrum, Diagnosis and Treatment**
Dale J. Lange, MD
- 9:15 am Diabetic Neuropathies: Classification, Clinical Features and Pathophysiological Basis**
P. James Dyck, MD
- 10:15 am Immune Modulating Therapy in Patients with Neuromuscular Disease**
Marinos C. Dalakas, MD
- 11:15 am Break**
- 11:30 am Caring for Patients with Amyotrophic Lateral Sclerosis: A Synthesis of European and American Guidelines**
Peter Andersen, MD, PhD
- 12:30 pm Lunch**
- 1:30 pm Resident/Fellow Case Presentation Competition**
Residents will present patients with discussions. Presentations will be selected from a pool of submissions. The two best presentations will be selected by audience and faculty.
- 3:00 pm Post Polio Syndrome**
This presentation will provide review of the pathophysiology and potential therapy for patients with post-polio syndrome.
Marinos C. Dalakas, MD
- 4:00 pm Adjourn**

Hospital for Special Surgery is an affiliate of NewYork-Presbyterian Healthcare System and Weill Cornell Medical College.



Hospital for Special Surgery is a participating organization of the Bone and Joint Decade.

Please note: This program may be recorded, filmed or photographed. By attending this program, you give permission to Hospital for Special Surgery to use your voice and likeness for any purpose (promotional, educational or other), in any medium, and without remuneration of any kind to you.

All rights reserved.
© 2010 Hospital for Special Surgery
Education Publications & Communications

Activity Faculty

CO-ACTIVITY DIRECTORS

Dale J. Lange, MD

Neurologist-in-Chief
Chair, Department of Neurology
Hospital for Special Surgery
Director, MDA/ALS Program
Weill Cornell Medical Center

Teena Shetty, MD

Assistant Attending Neurologist
Hospital for Special Surgery
Assistant Professor of Neurology
Weill Cornell Medical College

GUEST FACULTY

Peter Andersen, MD, DMSc

Associate Professor of Neurology
Institute of Clinical Neuroscience
Umea University
Umea, Sweden

Marinos C. Dalakas, MD, FAAN

Professor of Neurology
Chair, Clinical Neurosciences
Neuromuscular Diseases at
Imperial College
London, UK

P. James B. Dyck, MD

Associate Professor of Neurology
Mayo Clinic
Rochester, MN

Sanjeev D. Nandedkar, PhD

Senior Consultant
CareFusion
Middleton, WI

Jeremy Shefner, MD, PhD

Professor and Chair, Neurology
Upstate Medical University
Syracuse, NY

HSS FACULTY

Ronald S. Adler, PhD, MD

Chief, Division of Ultrasound and
Body CT, Radiology and Imaging
Attending Radiologist
Research Scientist
Hospital for Special Surgery
Attending Radiologist
New York Presbyterian Hospital
Professor of Radiology
Weill Cornell Medical College

Sherry I. Backus, PT, DPT, MA

Senior Physical Therapist
Leon Root, MD Motion Analysis
Laboratory
Rehabilitation Department
Hospital for Special Surgery

Anthony Chang, MD

Assistant Attending Radiologist
Hospital for Special Surgery
Assistant Professor of Radiology
Weill Cornell Medical College

Joseph H. Feinberg, MD

Associate Attending Physiatrist
Hospital for Special Surgery
Associate Professor of Clinical
Rehabilitation Medicine
Weill Cornell Medical College

**Alexandra MacKenzie, OTR/L,
CHT**

Staff Occupational Therapist
Hand Therapy
Rehabilitation Department
Hospital for Special Surgery

Douglas E. Padgett, MD

Chief, Adult Reconstruction and
Joint Replacement Division
Chief of Hip Service
Associate Attending
Orthopaedic Surgeon
Hospital for Special Surgery
Associate Professor of Clinical
Orthopaedic Surgery
Weill Cornell Medical College

Brion D. Reichler, MD

Assistant Attending Neurologist
Hospital for Special Surgery

Robert Schneider, MD

Chief, Nuclear Medicine
Attending Radiologist
Associate Professor of Radiology
Weill Cornell Medical College

Scott W. Wolfe, MD

Chief, Hand Service
Attending Orthopaedic Surgeon
Hospital for Special Surgery
Professor of Orthopaedic Surgery
Weill Cornell Medical College

Anita T. Wu, MD

Assistant Attending Neurologist
Hospital for Special Surgery
Assistant Professor of
Clinical Neurology
Weill Cornell Medical College

Karen Yanelli, PT, DPT

Staff Physical Therapist
Acute Care Service
Rehabilitation Department
Hospital for Special Surgery

PROGRAM COORDINATOR

Danielle McPherson

Professional Education
Events Coordinator
Education Division
Hospital for Special Surgery

CALL FOR CASE PRESENTATIONS

Resident/Fellow Case Presentation Competition

Residents will present patients with discussions. The top six presentations will be selected from a pool of submissions. The faculty and audience will judge all cases and two winners will be selected and awarded a prize for the best Neuromuscular case presentation.

The Hospital for Special Surgery Neurology Department wishes to announce a "Call for Case Presentations" at its upcoming CME activity, Neuromuscular Directions 2010: Current Concepts in Electrodiagnosis, Neurology/Orthopaedics Interface, and Neuromuscular Medicine to be held March 18-20, 2010 at the Hospital for Special Surgery, 535 East 70th Street, New York, NY. This symposium will focus on broadening knowledge, competence and performance of clinicians in the specialty of neuromuscular diseases and electrodiagnosis. The distinguished faculty represents the leading thinkers in the field today.

Submission Deadline: Wednesday, February 28, 2010

Residents/fellows submitting case presentations will receive:

- Registration fee waived
- Travel reimbursement (based on institutional travel policy)
- 1 night of lodging

Case Presentation Submission Instructions

Case presentations should be in Powerpoint® format including

- Patient history
- Imaging/electrodiagnostic waveforms/avi
- Discussion
- Total presentation duration: 15 minutes
- Patient identification should be excluded in compliance with HIPAA

Case presentations should be forwarded to:

Danielle McPherson
Professional Education
Events Coordinator
Education Division
PHONE 212.606.1812
FAX 212.734.3833
E-MAIL mcphersond@hss.edu





Registration

NEUROMUSCULAR DIRECTIONS 2010:

Current Concepts in Electrodiagnosis, Neurology/Orthopaedics Interface, and Neuromuscular Medicine

March 18 – 20, 2010

Please print.

DATE

NAME

DEGREE

TITLE

AFFILIATION

E-MAIL ADDRESS

ADDRESS

CITY/STATE/ZIP

DAYTIME PHONE

FAX NUMBER

AMOUNT ENCLOSED

AMERICAN EXPRESS MASTERCARD VISA

CREDIT CARD #

EXP. DATE

SIGNATURE

CHECK HERE TO RECEIVE THE HSS ENEWSLETTER. PLEASE INCLUDE EMAIL ADDRESS ABOVE.

REGISTER EARLY AS SPACE IS LIMITED!

REGISTRATION FEE	THURSDAY ONLY	FRIDAY ONLY	SATURDAY ONLY	EARLY BIRD ALL 3 DAYS BEFORE 2/17	ALL 3 DAYS
Physicians	<input type="radio"/> \$250	<input type="radio"/> \$250	<input type="radio"/> \$200	<input type="radio"/> \$650	<input type="radio"/> \$675
Allied Health	<input type="radio"/> \$150	<input type="radio"/> \$150	<input type="radio"/> \$100	<input type="radio"/> \$400	<input type="radio"/> \$675
Residents & Fellows	\$25 Application Fee				
Onsite	Add \$25 to above prices				

CONCURRENT WORKSHOP REGISTRATION

Please identify two Workshops you would like to attend:

- Repetitive Stimulation and Single Fiber EMG
- Intraoperative Monitoring for Spinal Cord Surgery
- Routine EMG and Nerve Conduction Studies

Registration fees include breakfast, lunch, lecture handouts and CME credits. All registered participants will receive a confirmation via e-mail.

Please note: registration will not be processed unless accompanied by payment.

TWO EASY WAYS TO REGISTER!

1. Register and pay online at www.hss.edu/cme and receive a discount.
2. Register by mail using the registration form.

PAYMENT BY MAIL

Make check payable to Hospital for Special Surgery

MAIL REGISTRATION FORM TO

Hospital for Special Surgery
Professional Education Department
Education Division
535 East 70th Street
New York, NY 10021

CONFIRMATIONS

All registered participants will receive a confirmation via e-mail.

REFUND POLICY

A handling fee of \$25 is deducted for cancellation. Refund requests must be received by mail one week prior to the course. No refund will be made thereafter.

ACCOMMODATIONS

For local accommodations, go to www.hss.edu and click on: For Patients, Patient Information, Neighborhood Directory, Accommodations.

TRANSPORTATION

AIRPORTS: LaGuardia (LGA) is 8 miles northeast of the city. Kennedy International (JFK) is 15 miles southeast of the city.

Newark International (EWR) is 16 miles southwest of the city.

TAXI: Approximate rates from LaGuardia to uptown Manhattan is \$28; from JFK: \$40; from Newark: \$43 plus tolls and gratuity.

BUS: M72, M31 stop at 69th Street and York Ave. By Subway: nearest line is the 6 train stop at 68th Street and Lexington Avenue

CAR: FDR Drive: Driving south, exit at 71st Street. Driving north, exit at 63rd Street. Continue on York Avenue.

PARKING: Parking garages are located in the area.

INFORMATION

For more information, please contact

Danielle McPherson
Professional Education Events Coordinator
Education Division
Hospital for Special Surgery
tel: 212.606.1812
email: mcphersond@hss.edu

535 East 70th Street
New York, NY 10021

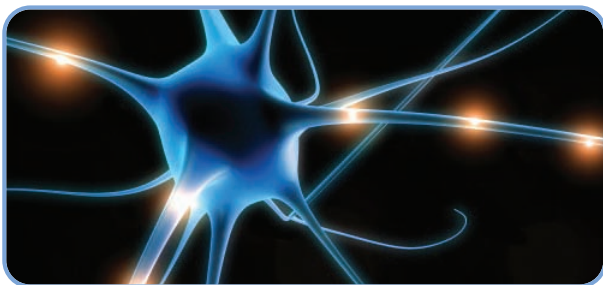
HOSPITAL
FOR
**SPECIAL
SURGERY**



HSS Education Division

***Programs Promoting
Musculoskeletal Health***

www.hss.edu/cme



NEUROMUSCULAR DIRECTIONS 2010:

Current Concepts in Electrodagnosis,
Neurology/Orthopaedics Interface,
and Neuromuscular Medicine

THURSDAY, FRIDAY & SATURDAY | MARCH 18 – 20, 2010