

Figure 1: Lateral (a), and extension (b) cervical spine X-rays demonstrating fixed cervical kyphosis measuring 77 and 74 degrees respectively. Anterior-posterior x-ray (c) shows fixed rotatory occipital cervical deformity.



Figure 2: Sagittal view at baseline (C) and 2 months later (D) showing fragmentation and partial dissolution of the mass.

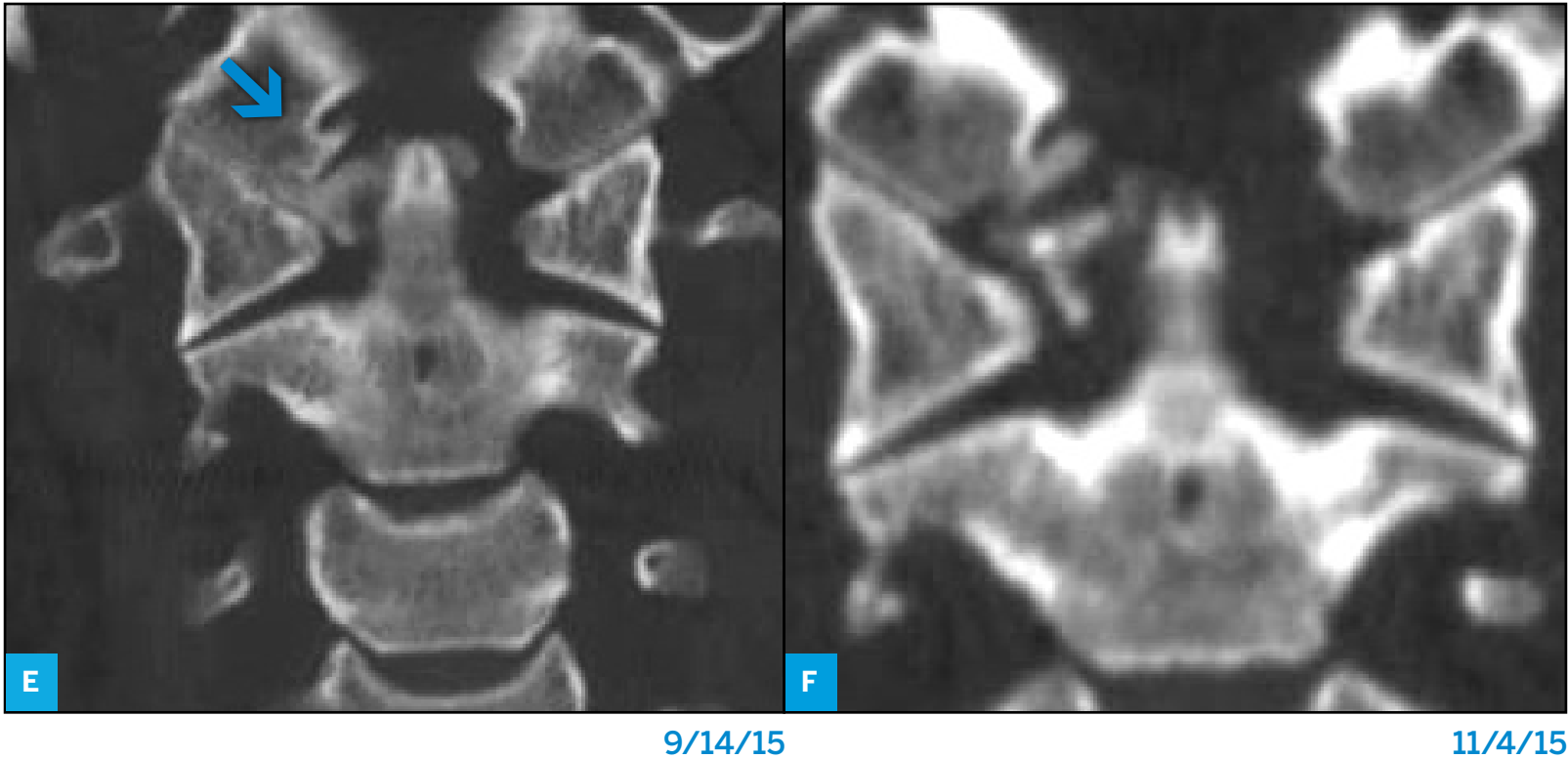


Figure 2 Continued: Coronal view at baseline (E) and 2 months later (F) showing fragmentation and partial dissolution of the mass.

REFERENCES:

1. Ungprasert P, Crowson CS, et al. Clinical characteristics of sarcoid arthropathy: a population-based study. *Arthritis Care Res* 2016; 68: 695-9.
2. Mana J, Gomez-Vaquero C, et al. Lofgren's syndrome revisited: a study of 186 patients. *Am J Med* 1999; 107: 240-5.
3. Chu A, Ginat D, et al. Chronic sarcoid arthritis presenting as an intra-articular knee mass. *J Clin Rheumatol* 2009; 15: 190-2.
4. Yee AMF. Sarcoidosis: rheumatology perspective. *Best Pract Res Clin Rheumatol* (in press).
5. Cremers JP, Drent M, et al. Multinational evidence-based World Association of Sarcoidosis and Other Granulomatous Disorders recommendations for the use of methotrexate in sarcoidosis: integrating systematic literature research and expert opinion of sarcoidologists worldwide. *Current Opin Pulm Med* 2013; 19: 545-61.