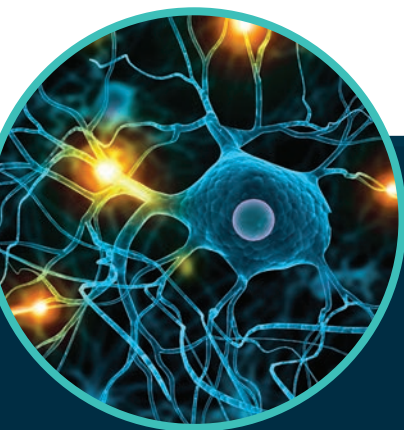


HOSPITAL  
FOR  
**SPECIAL  
SURGERY**



# HSS NEUROLOGICAL **DIRECTIONS** 2014



**UPDATES IN** NEUROMUSCULAR MEDICINE

**MARCH 20-22**

Hospital for Special Surgery

**FEATURING**

Joint Symposium with The ALS  
Association Greater New York Chapter  
on Saturday, March 20

**SPONSORED BY**

Hospital for Special Surgery  
Department of Neurology & Office  
of Continuing Medical Education



**LIVE STREAMING WEBCAST** is also available!

**CME** This activity has been approved for *AMA PRA Category 1 Credits™*.



# HSS NEUROLOGICAL DIRECTIONS 2014

## UPDATES IN NEUROMUSCULAR MEDICINE

Sponsored by Hospital for Special Surgery Department of Neurology & Office of Continuing Medical Education

**LOCATION** Hospital for Special Surgery  
Richard L. Menschel Education Center, 2nd Floor  
535 East 70<sup>th</sup> Street, New York City

**STATEMENT OF NEED** Neurology is an ever-changing medical specialty where there are limited venues available to present advances and new treatments for neuromuscular disease.

Clinicians are unfamiliar with evidence-based studies on topics such as the latest advances in diagnosis and treatments for neuromuscular diseases including neuropathies, myasthenia gravis, inflammatory myopathy, motor neuron disease such as amyotrophic lateral sclerosis (ALS), and EMG techniques.

**TARGET AUDIENCE** This activity is targeted to neurologists, rheumatologists, anesthesiologists, orthopaedists, physician assistants, nurse practitioners, residents, fellows and medical students.

**LEARNING OBJECTIVES** HSS professional education activities are intended to improve the quality of patient care and safety. At the completion of the course, the participant should be able to:

- ✓ Describe proper electrodiagnostic skills and perform safe and accurate needle EMG, NCV and facial studies in their own practice.
- ✓ Discuss and accurately interpret electrophysiological data which will allow for accurate diagnosis of neuromuscular diseases.
- ✓ Identify and reference professional guidelines for properly diagnosing common neurological disorders such as inflammatory myopathy and amyotrophic lateral sclerosis (ALS) and appropriately treat patients with these diseases.
- ✓ Identify and reference available evidence-based studies and be able to utilize evidence-based methods for diagnosing, treating and evaluating neuromuscular disorders, such as inflammatory myopathy and amyotrophic lateral sclerosis (ALS).

**ACCREDITATION** Hospital for Special Surgery is accredited by the Accreditation Council for Continuing Medical Education to provide continuing medical education for physicians.

**CREDIT DESIGNATION** Hospital for Special Surgery designates this live activity for a maximum of 22.0 *AMA PRA Category 1 Credits™* onsite and 14.75 *AMA PRA Category 1 Credits™* online. Physicians should claim only the credit commensurate with the extent of their participation in the activity.

**SPECIAL NEEDS** Hospital for Special Surgery is accessible for individuals with disabilities or special needs. Participants with special needs are requested to contact the Office of Continuing Medical Education at 212.606.1057.

**FINANCIAL DISCLOSURE** In accordance with the Accreditation Council for Continuing Medical Education's Standards for Commercial Support, all CME providers are required to disclose to the activity audience the relevant financial relationships of the planners, teachers and authors involved in the development of CME content. An individual has a relevant financial relationship if he or she has a financial relationship in any amount occurring in the last 12 months with a commercial interest whose products or services are discussed in the CME activity content over which the individual has control. It is the policy of Hospital for Special Surgery to disclose all financial relationships that planners, teachers and authors have with commercial interests.

It is the policy of Hospital for Special Surgery to request all financial relationships that Activity Directors, planning committee members, planners, authors and staff have with commercial interests, but to disclose to the activity audience only the **relevant** financial relationships/commercial interests.

**FOR MORE** Go to [www.hss.edu/cme](http://www.hss.edu/cme) for a complete calendar of scheduled live and online CME activities.

# PRELIMINARY AGENDA

## DAY 1 Thursday, March 20

### Basic Concepts in Clinical Neurophysiology

8:30a Registration and Breakfast\*

*Live streaming webcast begins for Day 1*

8:55a Welcome

9:00a Basics and Errors in NCV/EMG  
*William S. David, MD, PhD*

#### Electrophysiological Study of the Arm through Case Studies

10:00a Carpel Tunnel Syndrome/  
Median Neuropathy  
*Dora K. Leung, MD*

10:45a Break\*

11:00a Ulnar Neuropathy  
*Erin Manning, MD*

11:45a Brachial Plexus Injuries:  
Wrist Drop  
*Brion D. Reichler, MD*

*Live streaming webcast ends for Day 1*

12:45p Working Lunch  
*Workshops are taught by HSS faculty (45 minutes each)*

- Basic Median (MNCV/SNCV/F) NCV Arm workshop
- Basic Ulnar (MNCV/SNCV/F) NCV Arm workshop
- Basic Repetitive Stimulation Studies

2:30p Foot Drop: Mononeuropathy vs. Plexopathy: Case Studies  
*William S. David, MD, PhD*

3:30p Concurrent Workshops  
*Onsite participants register for 4 out of 8 workshops in advance (30 minutes each)*

- 1 Proximal Stimulation
- 2 Botox for Dystonia
- 3 Electrodiagnostic Case Studies
- 4 Somatosensory Evoked Responses
- 5 Facial Nerve Studies
- 6 EMG Waveform Identification
- 7 Laryngeal EMG
- 8 Writing an EMG Report

## DAY 2 Friday, March 21

### Immune Mediated Diseases of Nerve and Muscle

8:30a Registration and Breakfast\*

*Live streaming webcast begins for Day 2*

8:55a Welcome

9:00a Targets of Immunotherapy in Autoimmune Disorders and Emerging New Therapies  
*Marinos C. Dalakas, MD*

10:00a Multifocal Motor Neuropathy  
*Dale J. Lange, MD*

10:45a Break\*

11:00a CIDP and its "Many Faces"  
*Marinos C. Dalakas, MD*

11:45a Role of Neuroimaging in Inflammatory Nerve and Muscle Disease  
*Darius P. Melisaratos, MD*

12:30p Lunch\*

1:30p Inflammatory Myopathy  
*Stephen J. DiMartino, MD, PhD*

2:15p Stiff Person Syndrome  
*Marinos C. Dalakas, MD*

3:15p Break\*

3:30p Myasthenia Gravis  
*Jonathan M. Goldstein, MD*

4:30p Patient Presentation

*Live streaming webcast ends for Day 2*

## DAY 3 Saturday, March 22

### Joint Symposium on ALS with The ALS Association Greater New York Chapter

8:00a Registration and Breakfast\*

*Live streaming webcast begins for Day 3*

8:25a Welcome

8:30a Having Motor Neuron Disease in 2014: A Patient's Perspective

8:45a Update on Clinical Trials  
*Dale J. Lange, MD*

9:30a The Role of SOD1 in ALS: Two Decades of Discoveries, Defects and Disputes  
*Peter Andersen, MD, PhD*

10:15a Break\*

10:30a ALS Associated with C9orf72 Mutations: Why Is This Important to Both Familial and Sporadic Cases?  
*Vincenzo Silani, MD*

11:15a Neuropathological Staging of ALS and Its Mechanistic and Clinical Translation  
*Albert C. Ludolph, MD*

12:00p Lunch\*

1:00p Inflammation and the Role of Peripheral Blood Monocytes in ALS  
*James D. Berry, MD, MPH*

*Live streaming webcast ends for Day 3*

1:45p Concurrent Workshops  
*Onsite participants register for 4 out of 6 workshops in advance (30 minutes each)*

- 1 Clinical Trials: Why They Fail  
*James D. Berry, MD, MPH*
- 2 Diaphragm Pacing  
*Mona Shahbazi, MSN, NP*
- 3 Uses for Botox in Treating Patients with ALS  
*Alexander Shtilbans, MS, MD, PhD*
- 4 Stem Cell Therapy  
*Vincenzo Silani, MD*
- 5 Genetic Testing  
*Peter Andersen, MD, PhD*
- 6 Role of Toxins in ALS  
*Albert C. Ludolph, MD*

3:45p Closing Remarks\*

\*Not designated for AMA PRA Category 1 Credits™  
Faculty and agenda are subject to change.



Find Hospital for Special Surgery on the web!



Hospital for Special Surgery is an affiliate of NewYork-Presbyterian Healthcare System and Weill Cornell Medical College.

# ACTIVITY FACULTY

## ACTIVITY CO-DIRECTORS

**Dale J. Lange, MD**  
Chair, Department of Neurology  
Neurologist-in-Chief  
Director, ALSA Program  
Hospital for Special Surgery  
Director, MDA/ALS Program  
Professor of Neurology  
Weill Cornell Medical College  
New York, NY

**Dora K. Leung, MD**  
Assistant Attending Neurologist  
Hospital for Special Surgery  
Assistant Professor of Clinical Neurology  
Weill Cornell Medical College  
New York, NY

## GUEST FACULTY

**Peter Andersen, MD, PhD**  
Professor, Department of Pharmacology  
and Clinical Neuroscience  
Umeå University  
Umeå, Sweden

**James D. Berry, MD, MPH**  
Assistant Attending Neurologist  
Massachusetts General Hospital  
Assistant Professor of Neurology  
Harvard Medical School  
Boston, MA

**Marinos C. Dalakas, MD**  
Director, Division of Neuromuscular Diseases  
Professor of Neurology  
Thomas Jefferson University  
Philadelphia, PA  
Professor of Neurology and Chief  
Neuroimmunology Unit  
University of Athens Medical School  
Athens, Greece

**William S. David, MD, PhD**  
Director, Neuromuscular Diagnostic Center  
Director, EMG Laboratory  
Massachusetts General Hospital  
Associate Program Director  
Harvard Partners Neuromuscular Medicine  
Fellowship Training Program  
Boston, MA

**Albert C. Ludolph, MD**  
Director and Chair  
Department of Neurology  
University of Ulm  
Ulm, Germany

**Vincenzo Silani, MD**  
Professor and Chairman  
Department of Neurology  
IRCCS Istituto Auxologico Italiano  
University of Milan  
Milan, Italy

## HSS FACULTY

**Eliz Agopian, MD**  
Fellow, Neuromuscular Medicine

**Stephen J. DiMartino, MD, PhD**  
Assistant Attending Rheumatologist  
Instructor in Clinical Medicine  
Weill Cornell Medical College

**Jonathan M. Goldstein, MD**  
Associate Attending Neurologist  
Director of Perioperative Neurology

**Erin Manning, MD**  
Fellow, Neuromuscular Medicine

**Darius P. Melisaratos, MD**  
Assistant Attending Radiologist  
Assistant Professor of Radiology  
Weill Cornell Medical College

**Brion D. Reichler, MD**  
Assistant Attending Neurologist

**Mona Shahbazi, MSN, NP**  
Nurse Practitioner and  
Manager of Clinical Research  
Department of Neurology

**Alexander Shtilbans, MS, MD, PhD**  
Assistant Attending Neurologist  
Assistant Professor of Neurology  
Weill Cornell Medical College

## PROGRAM COORDINATOR

**Melody Mokhtarian**  
Marketing and Events Coordinator  
Professional Education  
Education & Academic Affairs  
Hospital for Special Surgery

# CALL FOR POSTERS

## NEUROLOGICAL DIRECTIONS POSTER COMPETITION

### The Department of Neurology at Hospital for Special Surgery wishes to announce a "Call for Posters"

at its upcoming CME activity, HSS  
Neurological Directions 2014: Updates in  
Neuromuscular Medicine, to be held March  
20-22, 2014, at Hospital for Special  
Surgery, 535 East 70th St., New York, NY.

This symposium will focus on broadening  
the knowledge and competence of  
clinicians in the specialty of neuromuscular  
diseases and electrodiagnosis. The  
distinguished faculty represents the  
leading thinkers in the field today.

### Submission deadline March 17, 2014

Five submissions will be selected as  
finalists from the submission pool.

We will supply a standard easel, 3' x 4'  
mounting board, tape, binder clips and  
other supplies for your poster.

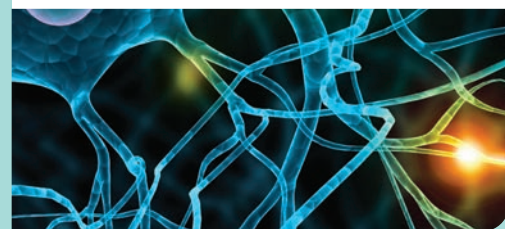
### Selected presenters will receive:

- Free conference registration
- Travel and meal reimbursement (based  
on institutional travel policy)
- One night of lodging

The winning poster will be selected by the  
faculty and awarded a prize.

### Posters should be submitted to: Melody Mokhtarian

Marketing and Events Coordinator  
Professional Education  
Education & Academic Affairs  
**Phone** 212.606.1812  
**Fax** 212.734.3833  
**Email** [mokhtarianm@hss.edu](mailto:mokhtarianm@hss.edu)



# PROGRAM REGISTRATION

Please print legibly.

\_\_\_\_ - \_\_\_\_ - \_\_\_\_\_  
DATE (MONTH-DAY-YEAR)

\_\_\_\_ | \_\_\_\_\_ | \_\_\_\_\_  
FIRST NAME MI LAST NAME

\_\_\_\_ | \_\_\_\_\_  
DEGREE AFFILIATION

\_\_\_\_ | \_\_\_\_\_ | \_\_\_\_\_  
EMAIL ADDRESS

\_\_\_\_ | \_\_\_\_\_ | \_\_\_\_\_  
STREET ADDRESS SUITE/APT #

\_\_\_\_ | \_\_\_\_\_ | \_\_\_\_\_  
CITY STATE ZIP CODE

\_\_\_\_ - \_\_\_\_ - \_\_\_\_\_  
DAYTIME PHONE

\$ \_\_\_\_\_  American Express  MasterCard  Visa  Check enclosed  
AMOUNT ENCLOSED

\_\_\_\_ | \_\_\_\_\_ | \_\_\_\_\_  
CREDIT CARD # EXP. DATE

X \_\_\_\_\_  
SIGNATURE

How did you hear about this course?

- Print brochure  Email blast  HSS website  Journal advertisement  
 LinkedIn ad  Recommendation  Google ad  Other \_\_\_\_\_  
 Check here to receive the HSS eNewsletter. Please include email address above.

## CONCURRENT WORKSHOPS (Onsite participants only; availability is first-come, first-served)

**Thursday, March 20** Please check the four workshops you would like to attend:

- \_\_\_ 1. Proximal Stimulation      \_\_\_ 4. Somatosensory Evoked Responses      \_\_\_ 6. EMG Waveform Identification  
 \_\_\_ 2. Botox for Dystonia      \_\_\_ 5. Facial Nerve Studies      \_\_\_ 7. Laryngeal EMG  
 \_\_\_ 3. Electrodiagnostic Case Studies      \_\_\_ 8. Writing an EMG Report

**Saturday, March 22** Please check the four workshops you would like to attend:

- \_\_\_ 1. Clinical Trials: Why They Fail      \_\_\_ 3. Uses for Botox in Treating Patients with ALS      \_\_\_ 5. Genetic Testing  
 \_\_\_ 2. Diaphragm Pacing      \_\_\_ 4. Stem Cell Therapy      \_\_\_ 6. Role of Toxins in ALS

## REGISTRATION FEES

Registration fees include breakfasts and lunches for onsite participants, and lecture handouts and CME credits for all participants. All registered participants will receive a confirmation via email.

	Thursday Only	Friday Only	Saturday Only	Any 2 Days	All 3 Days	Early Bird All 3 Days (Ends 2/28 at 5pm)
<b>ONSITE</b>						
Physicians	\$395	\$395	\$395	\$645	\$900	\$875
Allied Health	\$250	\$250	\$250	\$350	\$475	\$450
<b>LIVE STREAMING WEBCAST</b>						
Physicians	\$140	\$240	\$240	\$340	\$500	\$475
Allied Health	\$70	\$120	\$120	\$170	\$250	\$225
<b>ONSITE OR LIVE STREAMING WEBCAST</b>						
Residents/Fellows/Medical Students	\$25 Application Fee					

Registration closes 3/17 at 5pm. Registration will not be processed unless accompanied by payment. For day-of registration, please add \$25 to the appropriate category above (available only if space permits – please call ahead).

## TWO EASY WAYS TO REGISTER!

- 1 Register and pay online**  
at [www.hss.edu/cme-calendar](http://www.hss.edu/cme-calendar).
- 2 Register by mail**  
using the registration form.

## PAYMENT BY MAIL

**Make check payable to:**  
Hospital for Special Surgery

**Mail registration form to:**  
Hospital for Special Surgery  
Professional Education Department  
Education & Academic Affairs  
535 East 70th Street  
New York, NY 10021

## CONFIRMATIONS

All registered participants will receive a confirmation via email.

## REFUND POLICY

A handling fee of \$25 is deducted for cancellation. Refund requests must be received by mail one week prior to the course. No refund will be made thereafter.

## FOR MORE INFORMATION, PLEASE CONTACT

**Melody Mokhtarian**  
Marketing and Events Coordinator  
Professional Education  
Education & Academic Affairs  
Hospital for Special Surgery  
Tel: 212.606.1812  
Email: [mokhtarianm@hss.edu](mailto:mokhtarianm@hss.edu)

## PARKING, TRANSPORTATION & ACCOMMODATIONS

For information on parking, transportation directions and accommodations, please go to [www.hss.edu/visitor-information.asp](http://www.hss.edu/visitor-information.asp) and view our Neighborhood Directory. Local accommodations are limited and early reservations are recommended.

*This program may be recorded, filmed or photographed by Hospital for Special Surgery. By attending this program, you give permission to Hospital for Special Surgery to use your voice and likeness for any purpose (promotional, educational or other), in any medium, and without remuneration of any kind to you.*

All rights reserved.

© 2014 Hospital for Special Surgery  
Design: Christina Fisher, MFA & Paggie Yu  
Education Publications & Communications

**Hospital for Special Surgery**

535 East 70th Street  
New York, NY 10021

HOSPITAL  
FOR  
**SPECIAL  
SURGERY**



**HSS Education &  
Academic Affairs**

Programs Promoting  
Musculoskeletal Health

[www.hss.edu/cme](http://www.hss.edu/cme)

**NEW! HSS eAcademy**

Earn CME/CEU credit online  
through our on-demand offerings

[www.hss.edu/eAcademy](http://www.hss.edu/eAcademy)



HSS NEUROLOGICAL  
**DIRECTIONS** 2014  
MARCH 20–22, 2014

**UPDATES IN** NEUROMUSCULAR MEDICINE



**LIVE STREAMING WEBCAST** is also available!