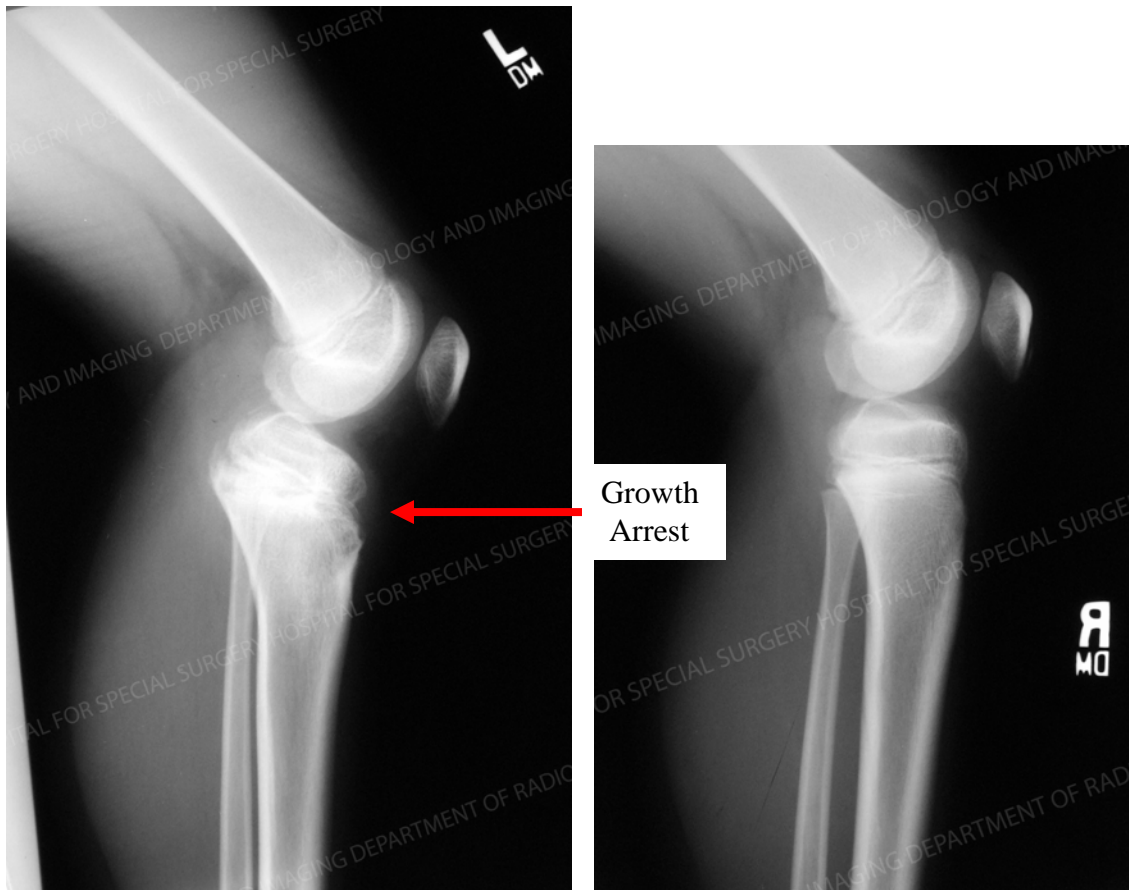




**Limb Lengthening Case Study #2:** Patient is currently a 15 year old male who presented at age 10 after sustaining an injury to his left proximal tibial growth plate while jumping on a trampoline. The injury resulted in premature closure of the anterior portion of the tibial growth plate with resultant progressive recurvatum deformity and leg length discrepancy.

Surgical plan – Gradual deformity correction and lengthening utilizing a Taylor Spatial Frame.

Figure 1A and 1B: Pre-op lateral images of the both knees demonstrating the recurvatum deformity of the left knee as compared to his right knee, which is normal.



Cont'd next page...

Figure 2: Pre-op photo prior to removal of Spatial Frame.



Cont'd next page...

Figure 3A and 3B: Post-op lateral demonstrating angular correction.

Pre-op

Post-op



Cont'd next page...

Figure 4: Photo of the patient after his successful limb lengthening procedure.



Figures 5,6: Photos of the patient after his successful limb lengthening procedure.

