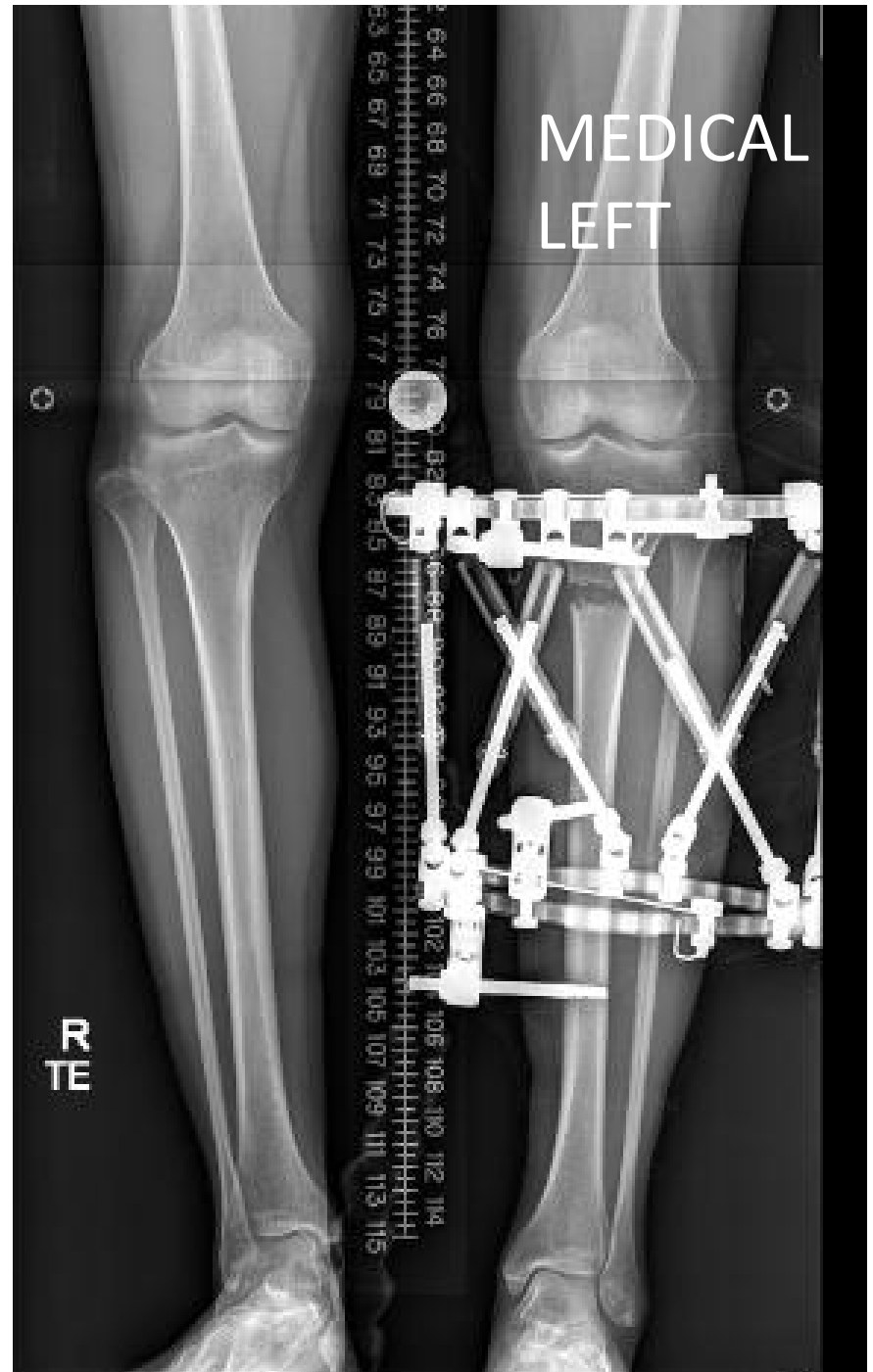


# Staged Bilateral Surgery Timeline

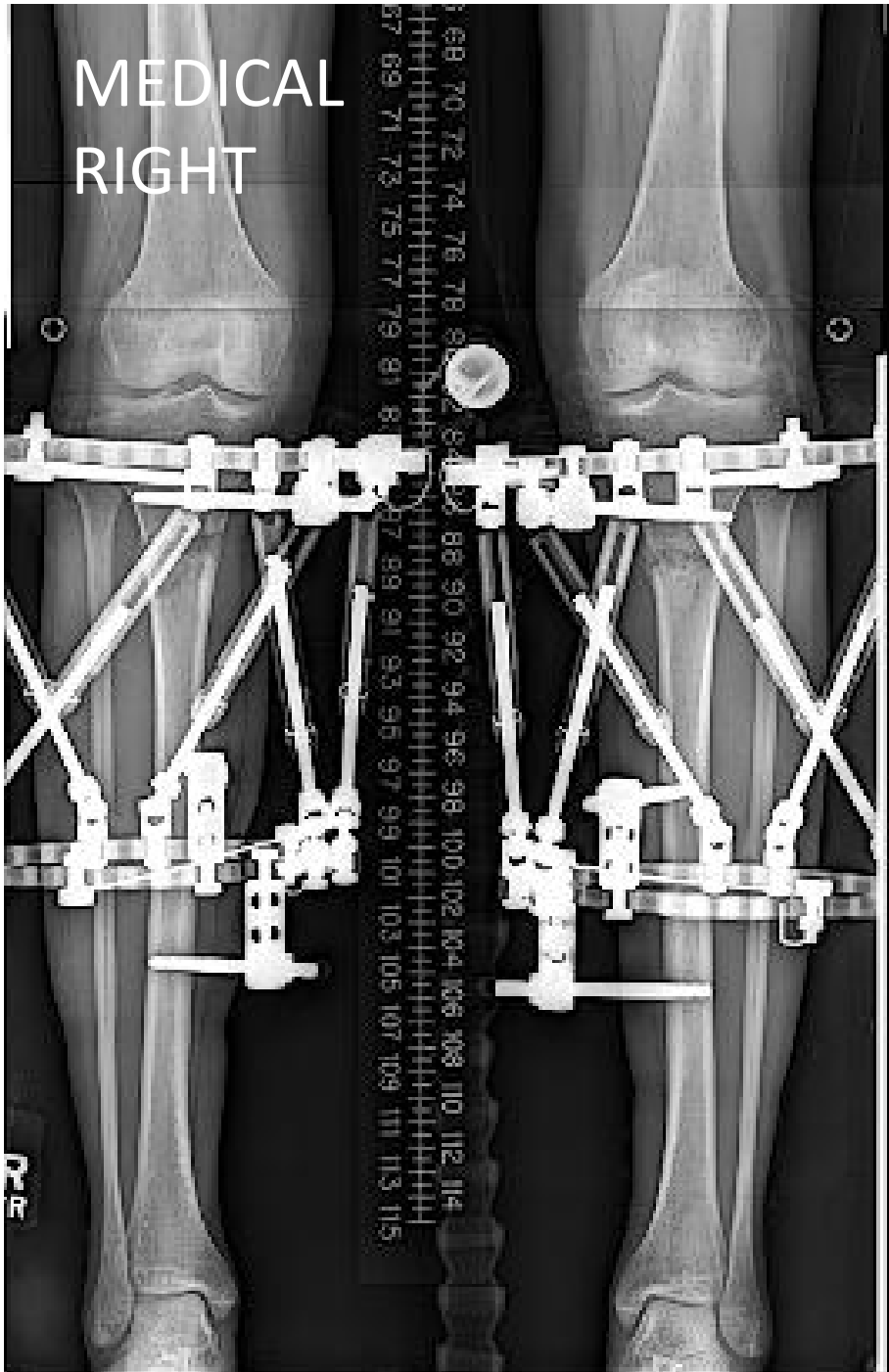
# Pre Op



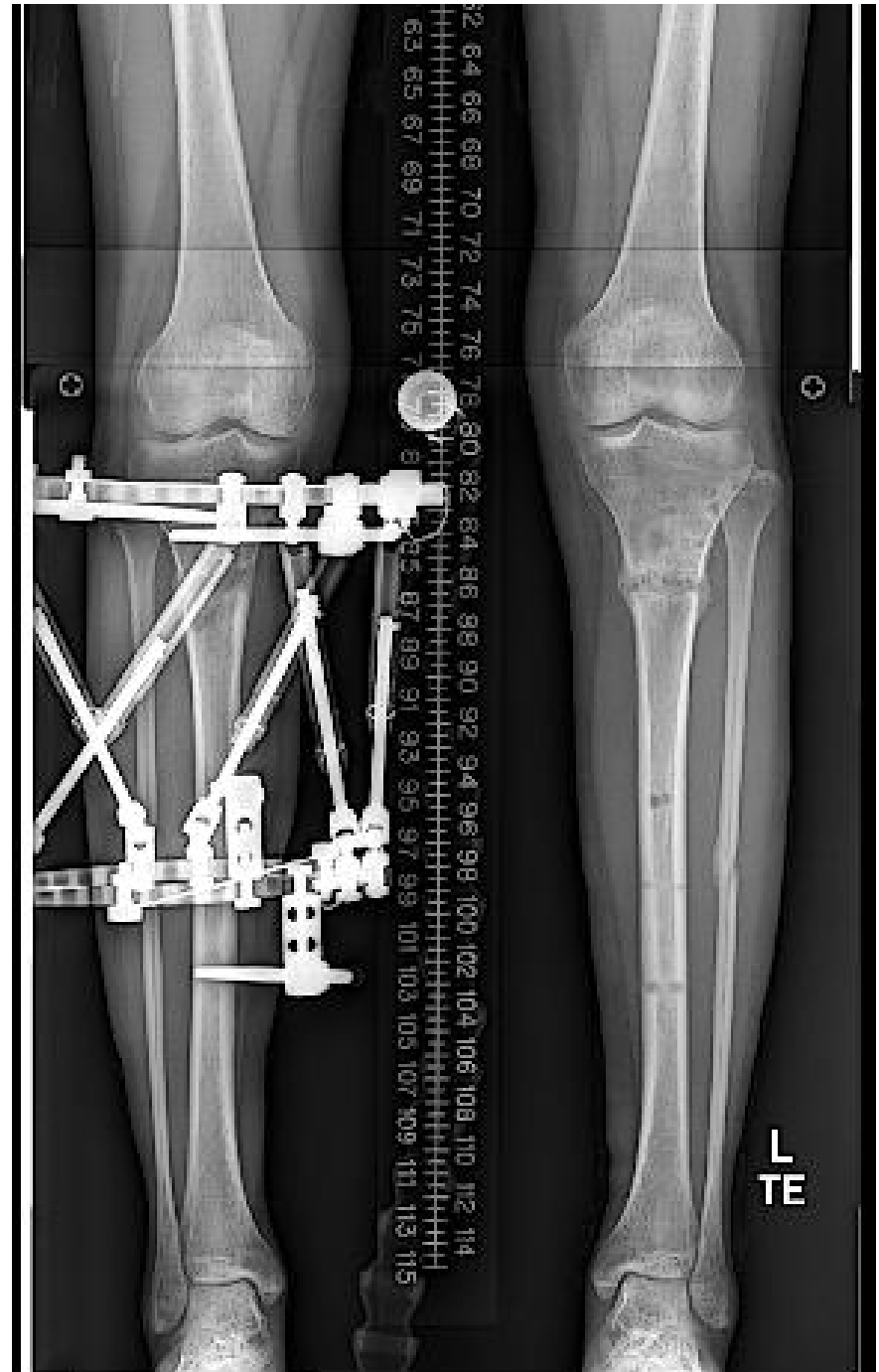
# Week 0 (Left Side Surgery)



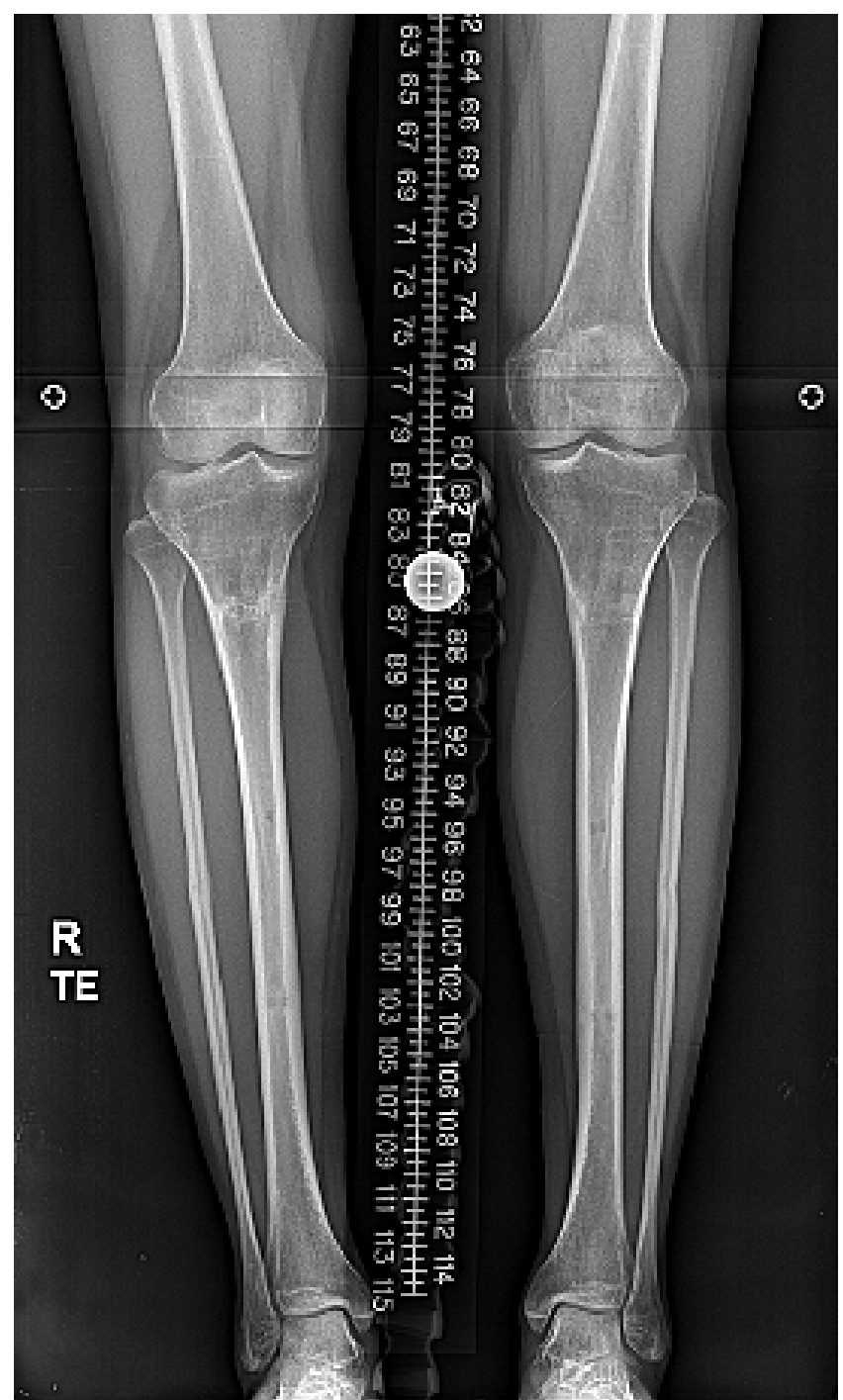
**Week 6**  
**(Right Side**  
**Surgery)**



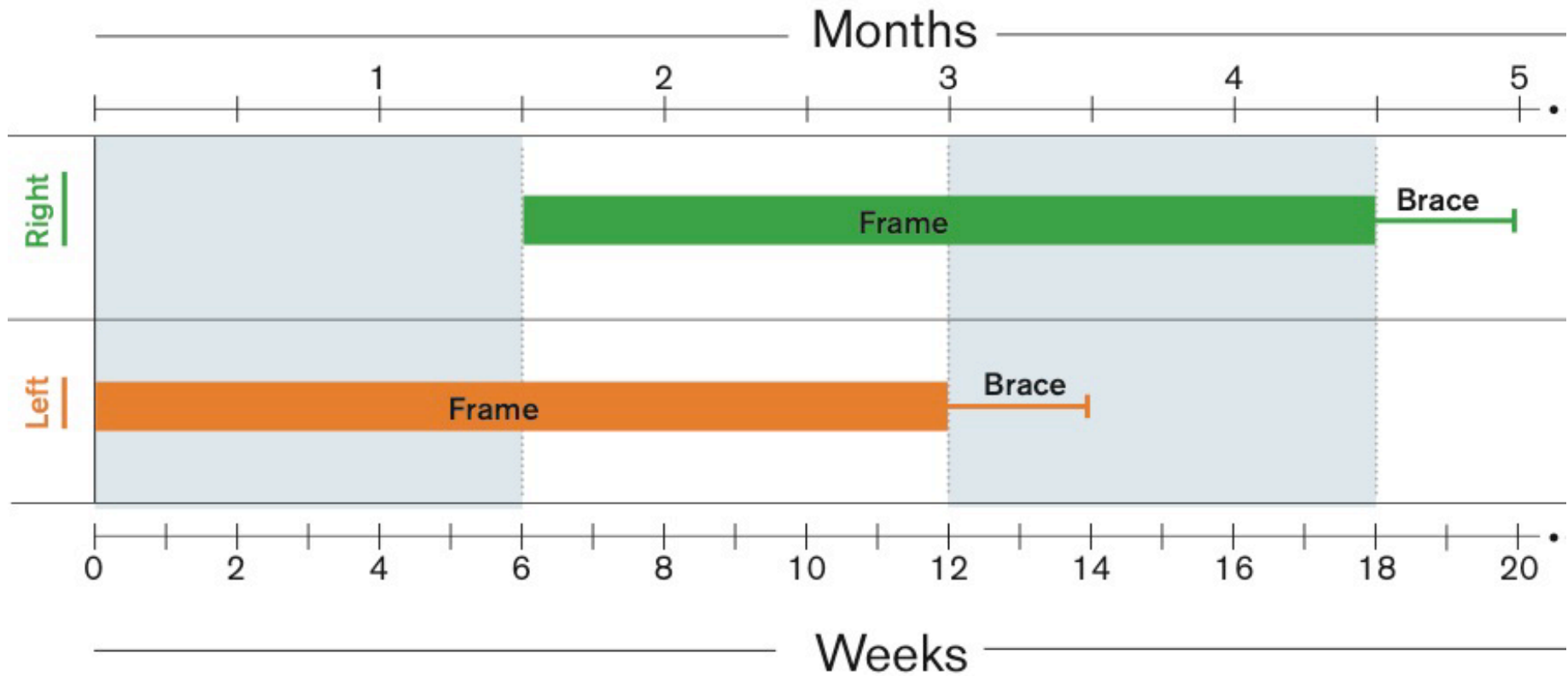
# Week 12 (Removal of Left Frame)



# Week 18 (Removal of Right Frame)



# Time in Frame Graphic



# Work Schedule and Crutches Use

