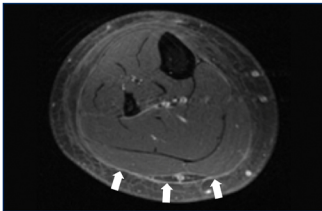
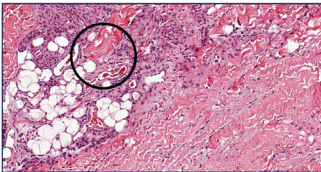


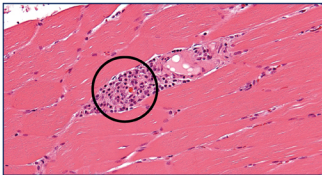
**Figure 1:** Axial inversion recovery MRI image demonstrates extensive subcutaneous edema that is consolidated around the superficial fascia of the lower leg compartments. The signal from muscle and bone marrow is unremarkable.



**Figure 2:** Axial post contrast fat suppressed T1 weighted MRI image demonstrates diffuse enhancement of the superficial fascia. There is no intramuscular enhancement to suggest myositis.



**Figure 3:** This intermediate-magnification photomicrograph from the fascia shows inflammation in the fat and around the vessels extending into the collagenous stroma (pink fibers) of the fascia, typical of eosinophilic fasciitis. (H&E, x10).



**Figure 4:** This high-magnification photomicrograph from the skeletal muscle shows inflammation in the intersitium around vessels without necrosis or degenerative changes of the surrounding muscle fibers indicating non-myositic interstitial inflammation appropriate for eosinophilic fasciitis. (H&E, x20)