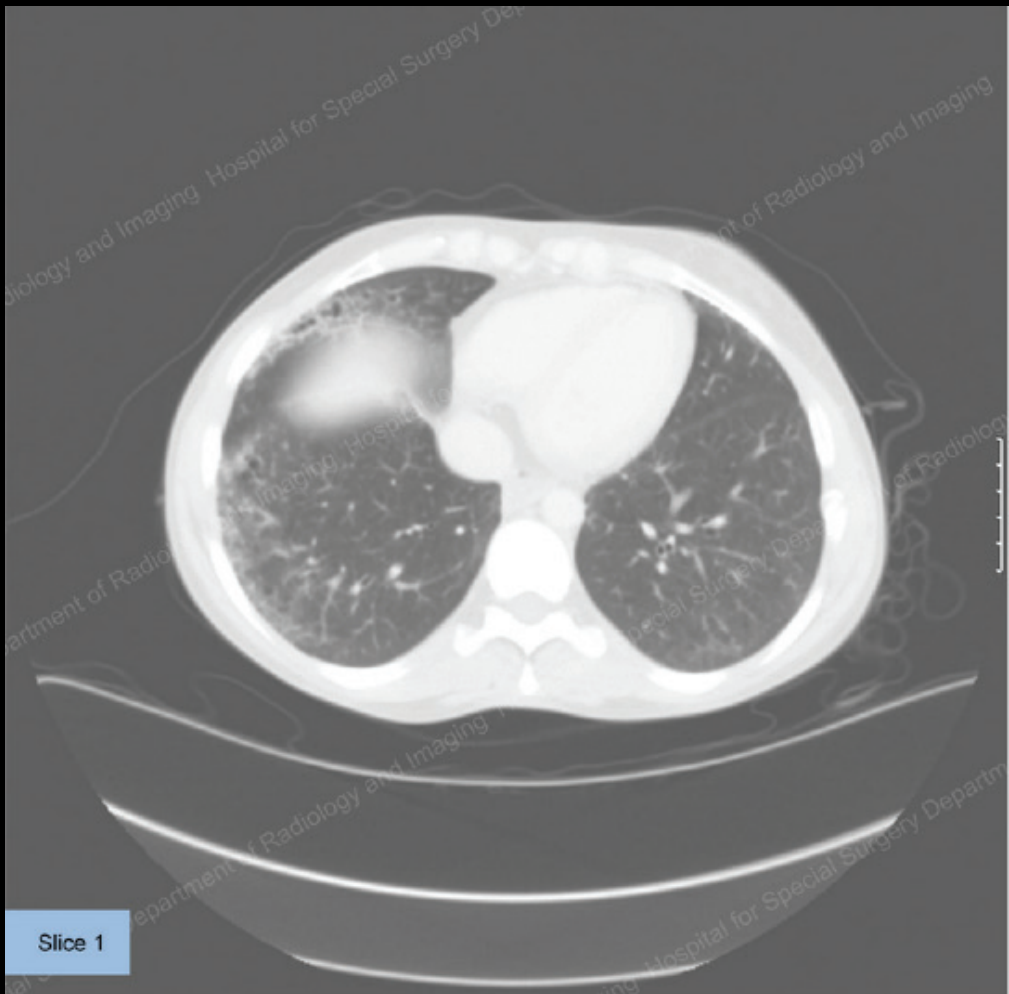
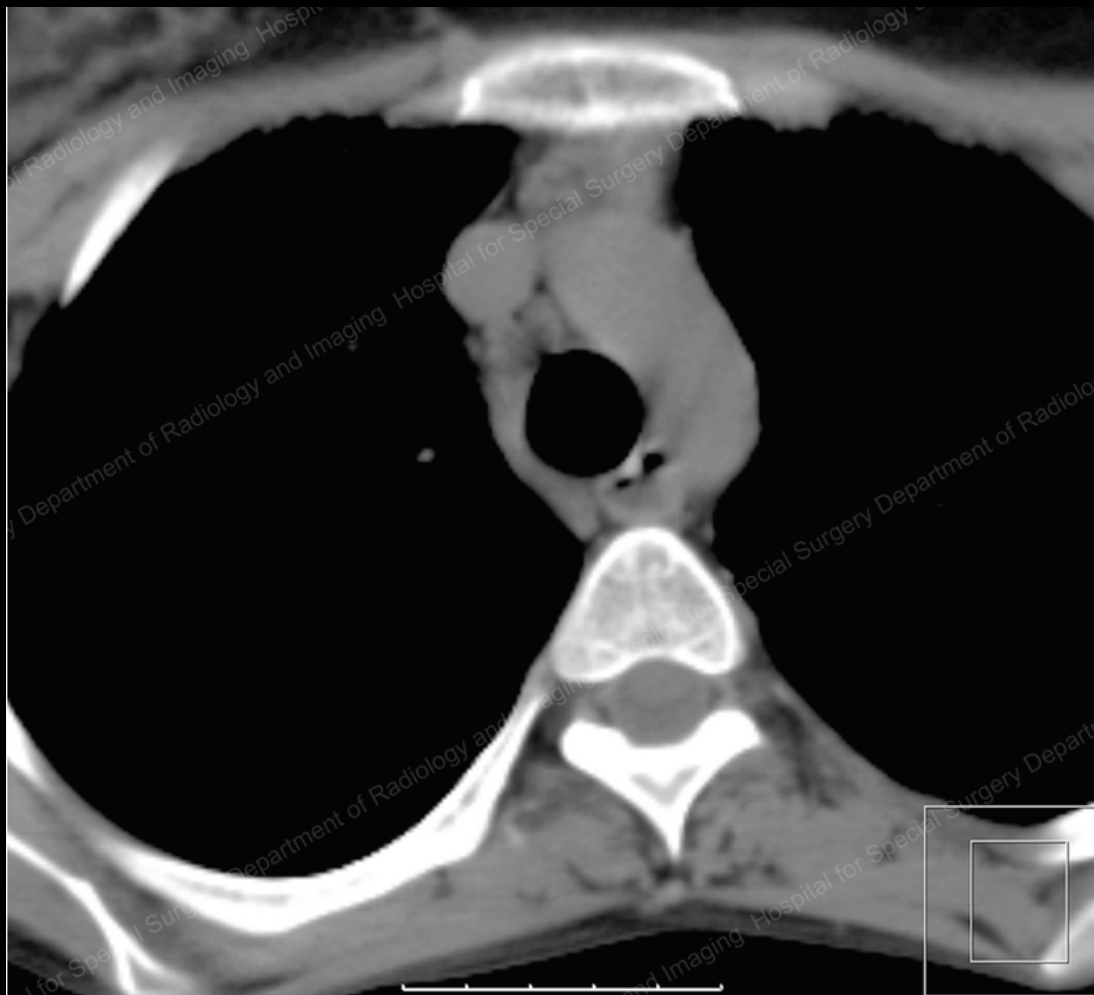


History

22-year-old woman with lower extremity pain and weakness. Previous history of shortness of breath but not at the present.



CT through the lung bases using a lung window.

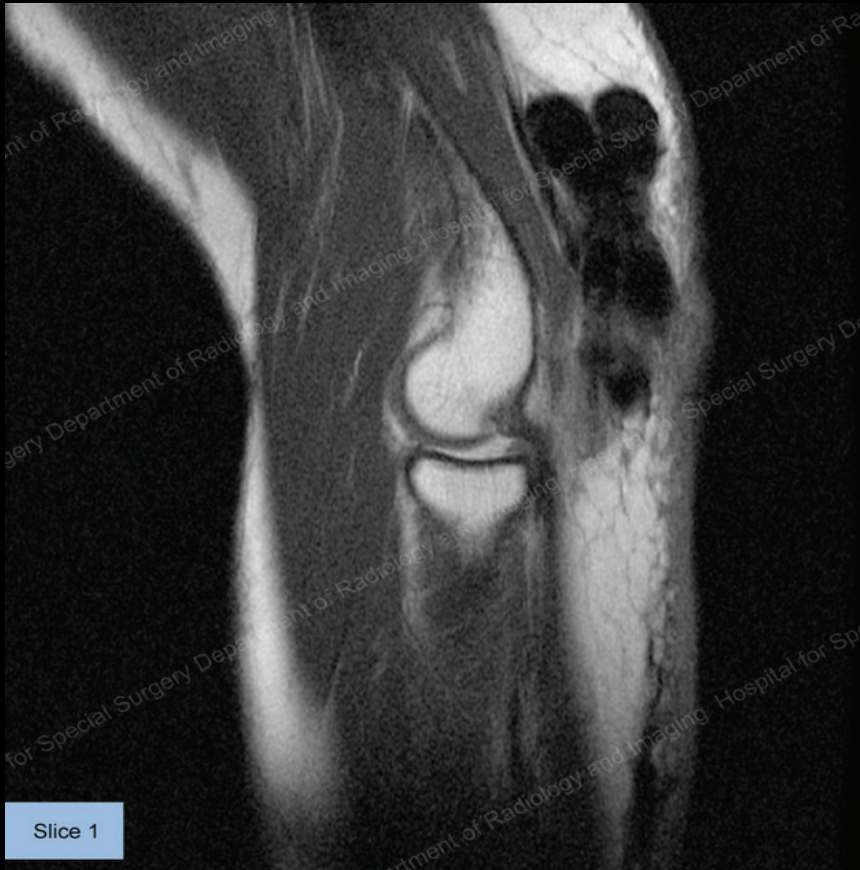


CT through the upper mediastinum using a soft tissue window.

Findings

MRI of the lower extremities demonstrates high signal on the IR sequence indicating an edema pattern within the gluteus medius (left more than right) and then in both sets of adductor musculature. CT of the lung bases demonstrates interstitial lung disease with reticulonodular opacities at the periphery and mild honeycombing. CT of the upper mediastinum demonstrates a patulous esophagus with fluid and air seen within the distended lumen.

Additional case - same diagnosis



Sagittal Proton Density MRI through the left elbow.

History

62-year-old woman with palpable mass of left elbow.



AP and lateral radiographs of the left elbow.

Findings - additional case

Sagittal MRI demonstrates low signal masses in the posterior soft tissue that on radiographs corresponds with large, confluent, tumorlike calcification in the posterior soft tissue.

Diagnosis - Scleroderma

Comments: Connective tissue disorder more prevalent in women than men that produces symptomatology generally in the second to third decade and continues to progress. Underlying pathology is a fibrosis that affects multiple organ systems. Classic findings include myositis of the proximal musculature that later precipitates fatty atrophy and large, conglomerate tumorlike or sheet like calcification of the soft tissue. It is frequently associated with other syndromes and produces an interstitial lung disease, preferentially at the lung bases, and esophageal dysmotility or a patulous esophagus.

Resources

- Resnick, D. Kransdorf, M. Bone and Joint Imaging. 3rd Edition. 2005.
- <http://www.medicinenet.com/scleroderma/article.htm>
- <http://emedicine.medscape.com/article/331864-overview>
- Bassett LW, Blocka KL, Furst DE, Clements PJ, Gold RH. [Skeletal findings in progressive systemic sclerosis \(scleroderma\)](#). AJR Am J Roentgenol. 1981 Jun;136(6):1121-6.

Further Reading

- Professional Articles and Presentations on [Scleroderma](#) from HSS.edu

[Sign up for our monthly eNewsletter](#) to find out when a new case will be posted.