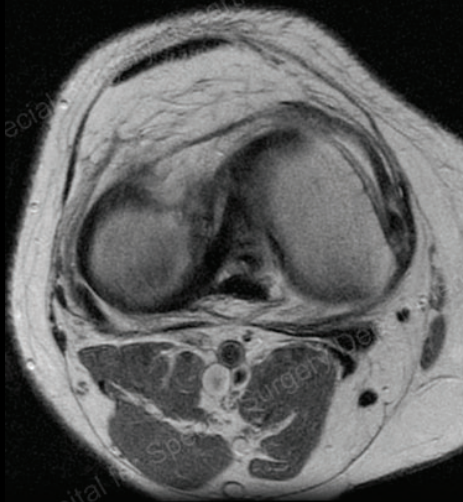


Multiple consecutive images from PD sagittal sequence.

## History

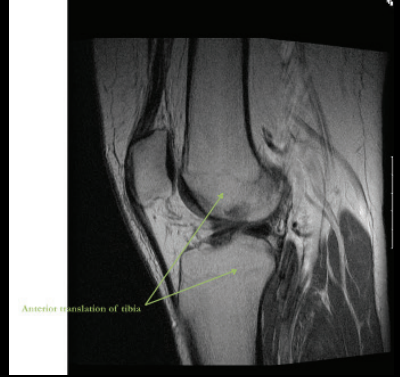
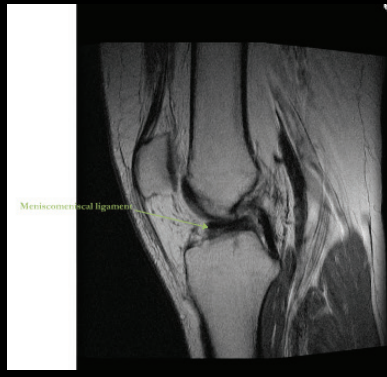
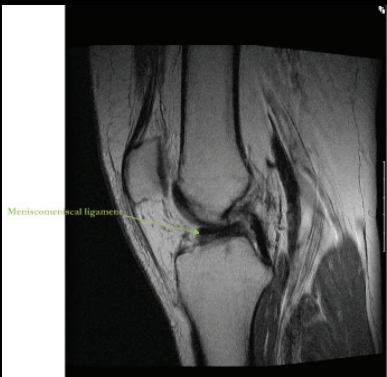
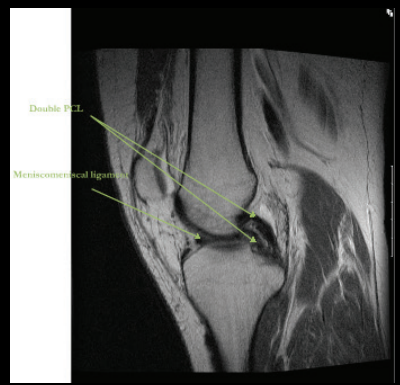
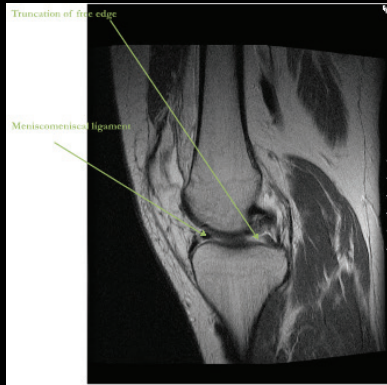
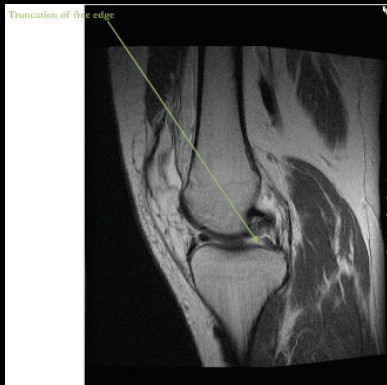
25 year old man with 4 years of knee pain and clicking sensation.



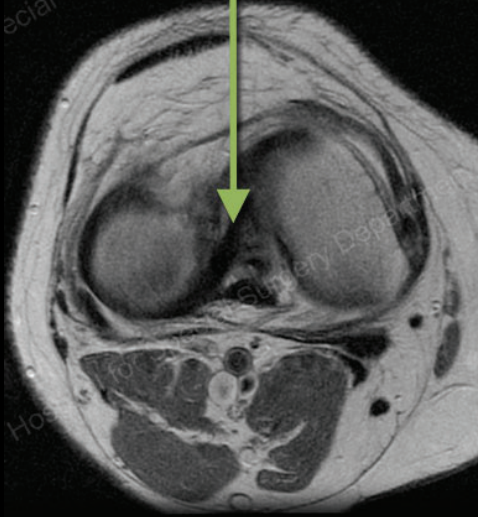
Axial and Coronal PD images through the level of the articular surface

# Findings

On the sagittal images, there is a truncation along the free edge of the medial meniscus with a so called double PCL sign. The tibia is anteriorly positioned relative to the femur and there is a band of low signal intensity that courses through the joint from the posterior horn of the lateral to the anterior horn of the medial mensicus.



Meniscomeniscal ligament



Bucket handle fragment of meniscus



# Diagnosis: Tarsal Coalition

Bucket handle tear of the medial meniscus in the setting of a chronic disruption of the ACL. Additional anatomic variant of an oblique meniscomeniscal ligament that extends from the posterior horn of the lateral meniscus to the anterior horn of the medial meniscus. The bucket handle tear is a longitudinal tear with displacement of the meniscal fragment within the intercondylar notch.

In a small percentage of people, 1 to 4 %, apart from the transverse meniscal ligament, meniscomeniscal ligaments, and meniscotibial ligament, an oblique meniscomeniscal ligament can occur. This courses from the posterior horn of one meniscus to the anterior horn of the other. This can be confused with a bucket handle tear and is crucial to be identified prior to surgery to prevent inappropriate resection.

# Resources

- <http://radiology.rsna.org/cgi/content/full/213/1/213>
- Resnick and Kransdorf. Bone and Joint Imaging. 2005.

[Sign up for our monthly eNewsletter](#) to find out when a new case will be posted.