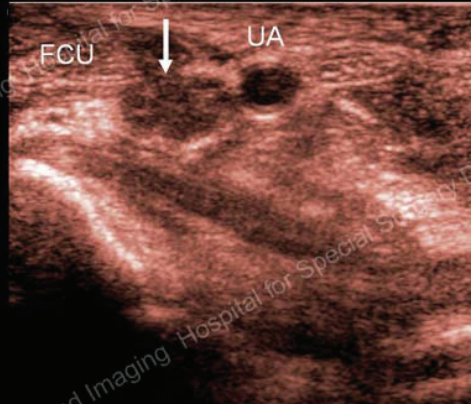
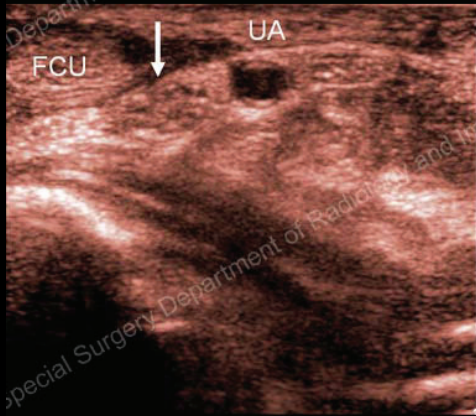




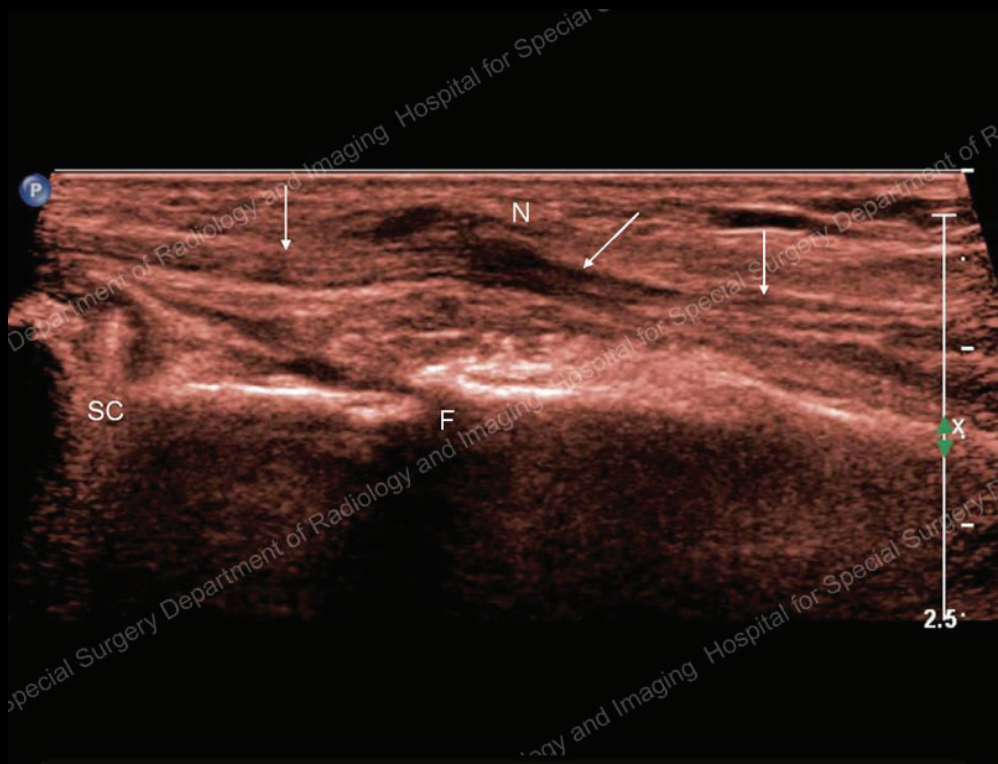
Frontal radiograph of the wrist shows ulnar fracture line (arrow) as well plate and screw fixation of the radial and ulnar fractures.

## History

73 y/o female s/p ORIF of a radial/ulnar fracture. New onset of ulnar neuropathy.



Two sequential transverse images of the ulnar nerve (arrows). On the left, the nerve has a normal morphology. The flexor carpi ulnaris tendon (FCU) and ulnar artery (UA). The image on the right is obtained slightly more distally and shows the nerve as infiltrated by hypoechoic scar tissue.



Extended field-of-view image of the ulna in long axis shows the nerve (arrows) and scar/neuroma formation. The ulnar fracture (F) is seen as a step-off in the bone. On the far left side of the image a screw (SC) projects through the cortex of the bone.

# Diagnosis:

**Scar encasement/neuroma formation about ulnar nerve.**