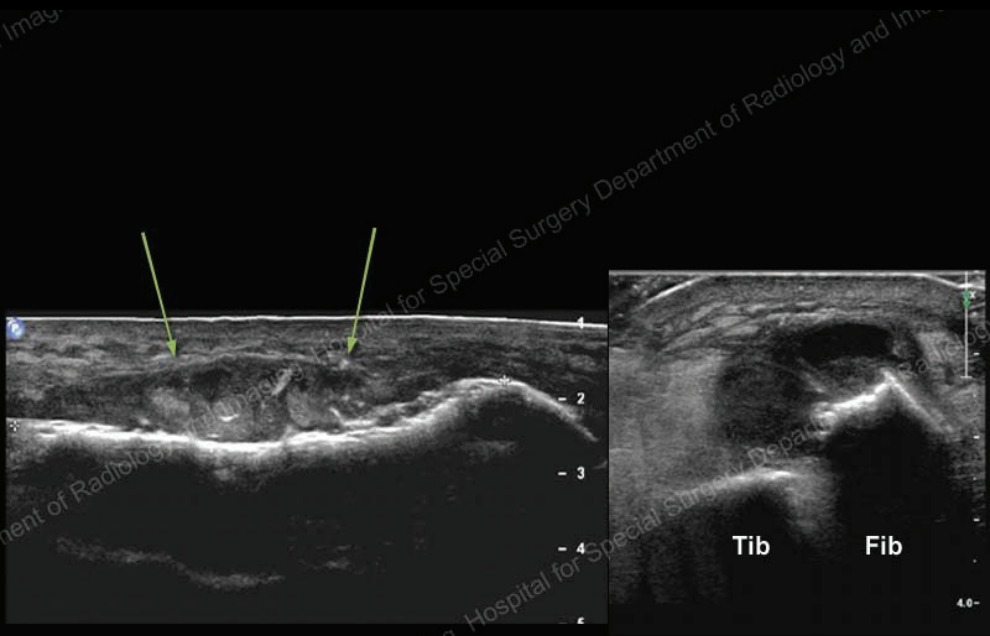




Radiographs interpreted as demonstrating osteopenia and periostitis suspicious for infection

## History

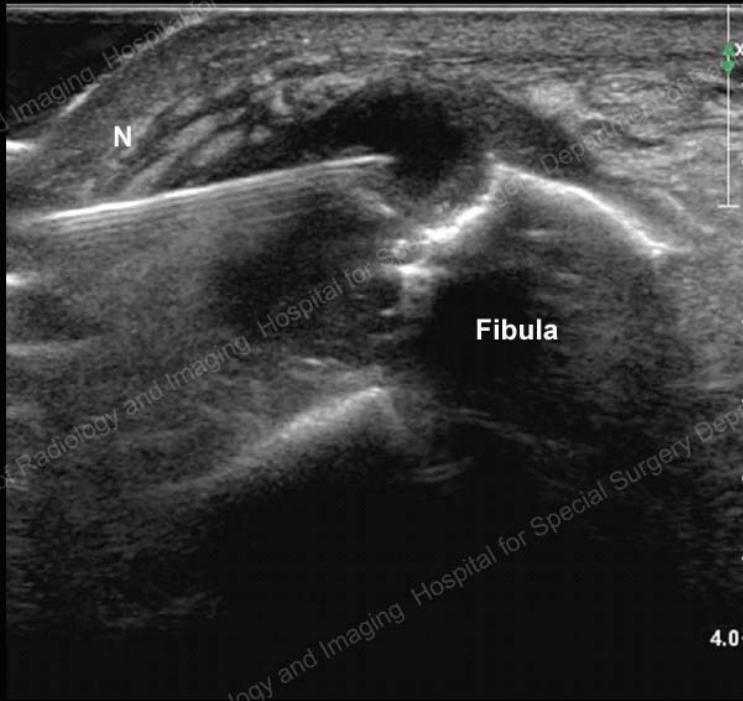
95 y/o male with a pacemaker and history of chronic renal insufficiency with left leg pain and swelling.



Long Fibula

Trans

Longitudinal and transverse images of the leg show a complex subperiosteal collection (arrows) with scalloping of the fibular cortex and spicules of new bone formation



Ultrasound guided aspiration resulted in grossly purulent material. Infection was confirmed on laboratory studies. The needle (N) is labeled. Diagnosis: Osteomyelitis