



Figure 1: Preoperative AP radiographs of the knees showing genu valgum deformity.

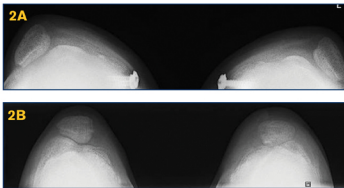


Figure 2A and 2B: Preoperative merchant views of the knees: showing patellar dislocation (2A) and showing postoperative correction (2B).

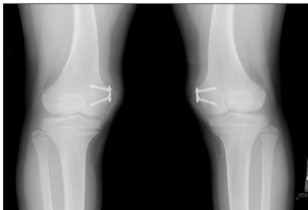


Figure 3: Postoperative AP radiographs of the knees showing correction of the genu valgum deformity after medial guided growth procedure using tension plate implantation.

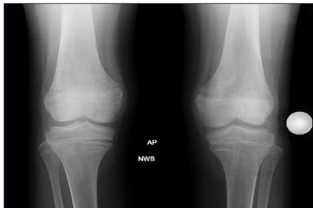


Figure 4: Postoperative AP radiographs of the knees.

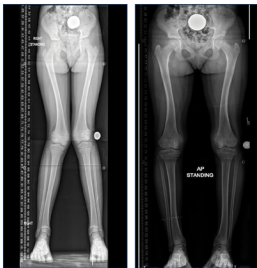


Figure 5: Standing Pre and Post operative radiographs showing valgus deformity and corrected alignment.