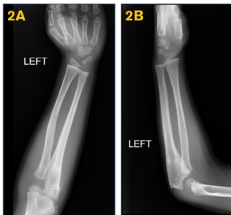


**Figure 1A and 1B:** Pre-operative AP and lateral of the elbow revealing lateral dislocation of the radial head with associated plastic deformation of the ulna.



**Figure 2A and 2B:** AP and lateral of the elbow and forearm following surgical correction and removal of intramedullary rod fixation. The radial head is located and radio-ulnar alignment is restored.