



Figure 1 – At age 9 showing 5.5cm LLD.



Figure 2 – X-ray after 5cm of right femur lengthening using a monolateral frame.

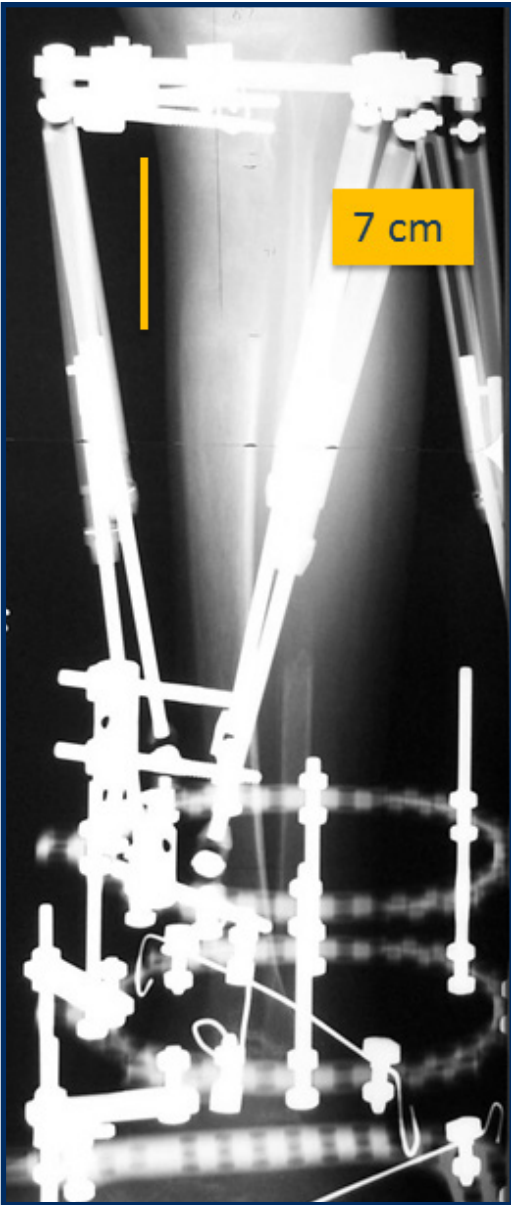


Figure 3 – X-ray at at age 12, after a 7cm tibial/ fibula lengthening with a TSF.

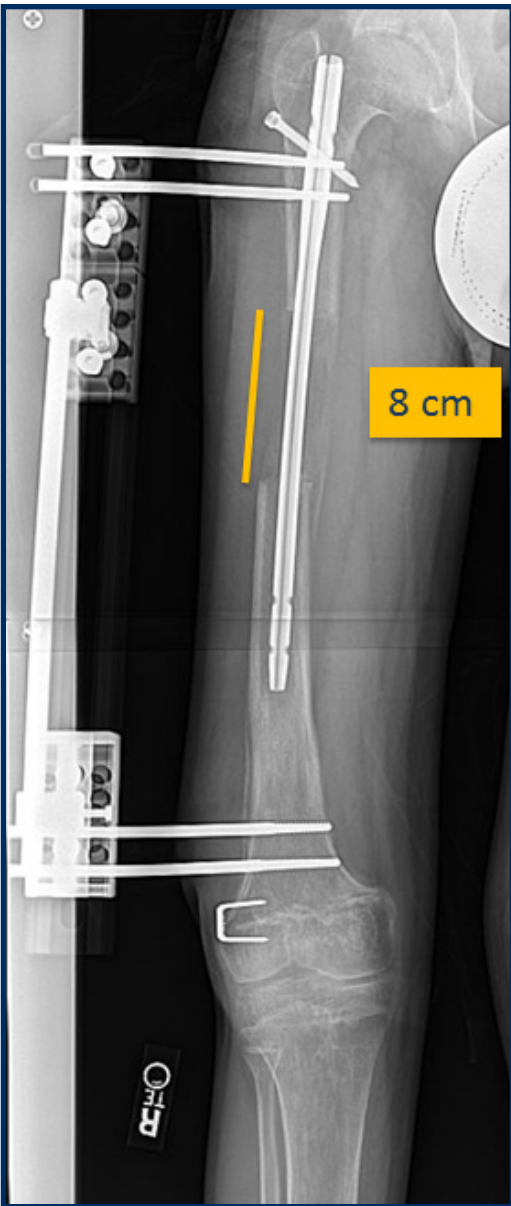


Figure 4 – X-ray at age 15, after an 8cm femur lengthening using LON technique.



Figure 5 – Standing x-ray showing equal leg lengths after 3 right lower extremity lengthenings totaling 20cm. Left side has undergone epiphysiodesis.



Figure 6 – At age 15 after 20cm of lengthening.