



Figure 1 – X-ray of the left femur showing sclerotic bone ends and a cement spacer at the femur nonunion site.

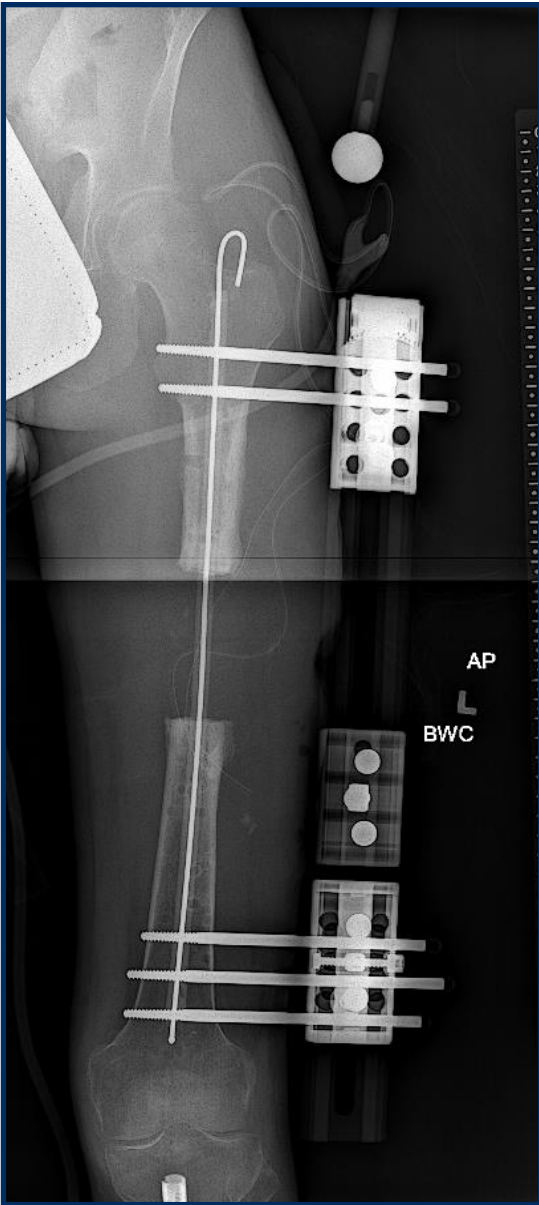


Figure 2 – X-ray after a large bone resection was performed, and a vancomycin-PMMA coated guide wire was inserted into the IM canal. A monolateral external fixator was placed by inserting the pins into the femur posterior to the IM canal.

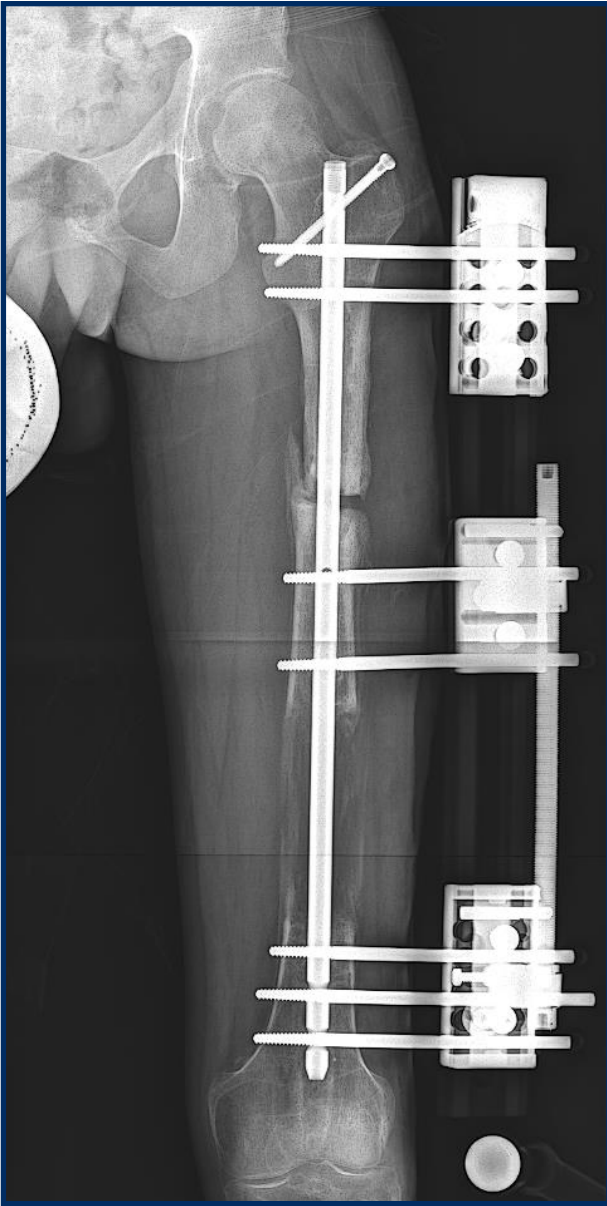


Figure 3 – X-ray after distraction osteogenesis. The IM nail was not locked distally to allow for further lengthening after docking the transport segment.



Figure 4 – Follow up x-ray shows a well healed docking site and circumferential healing of the regenerate with thick cortices.