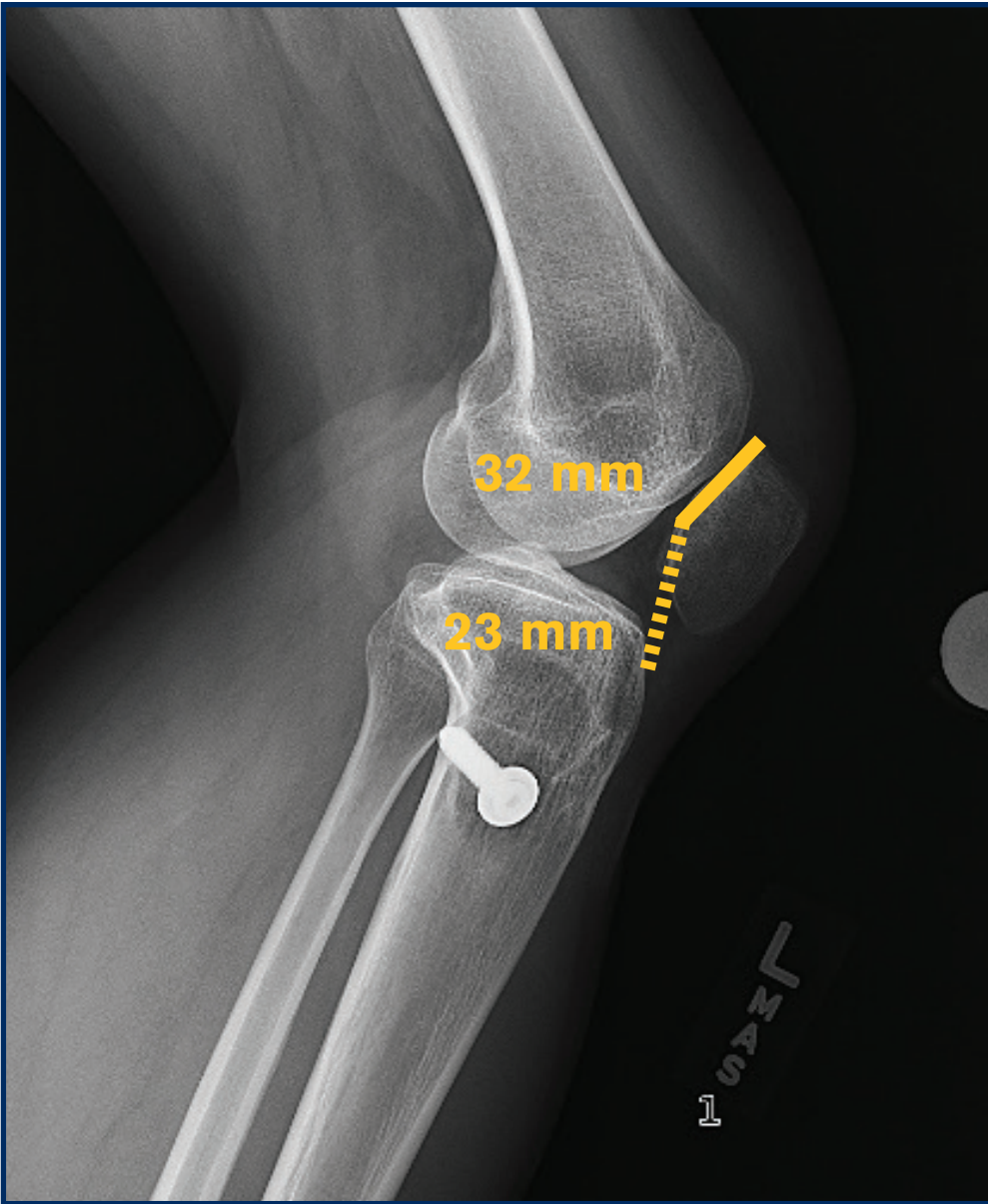
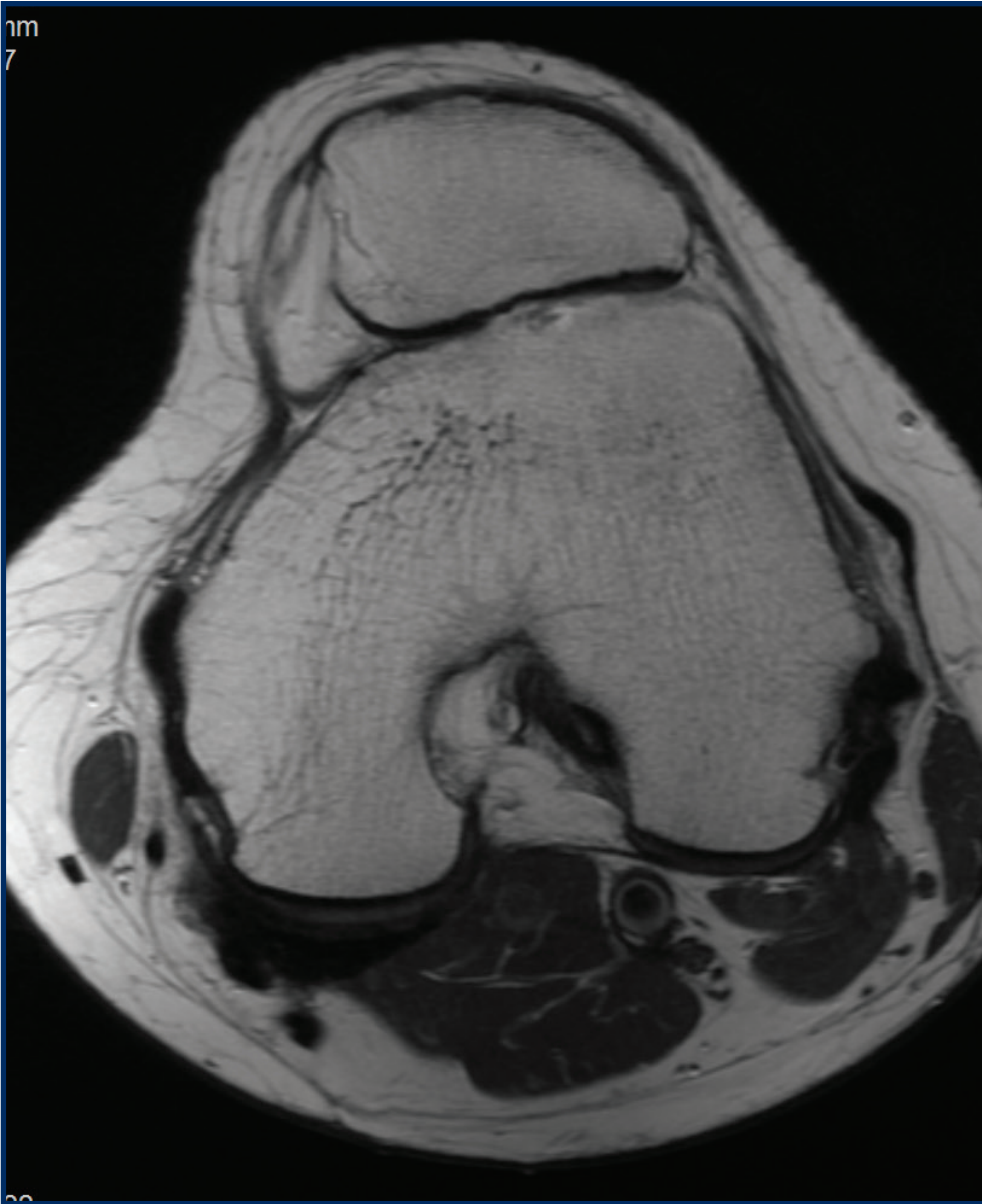


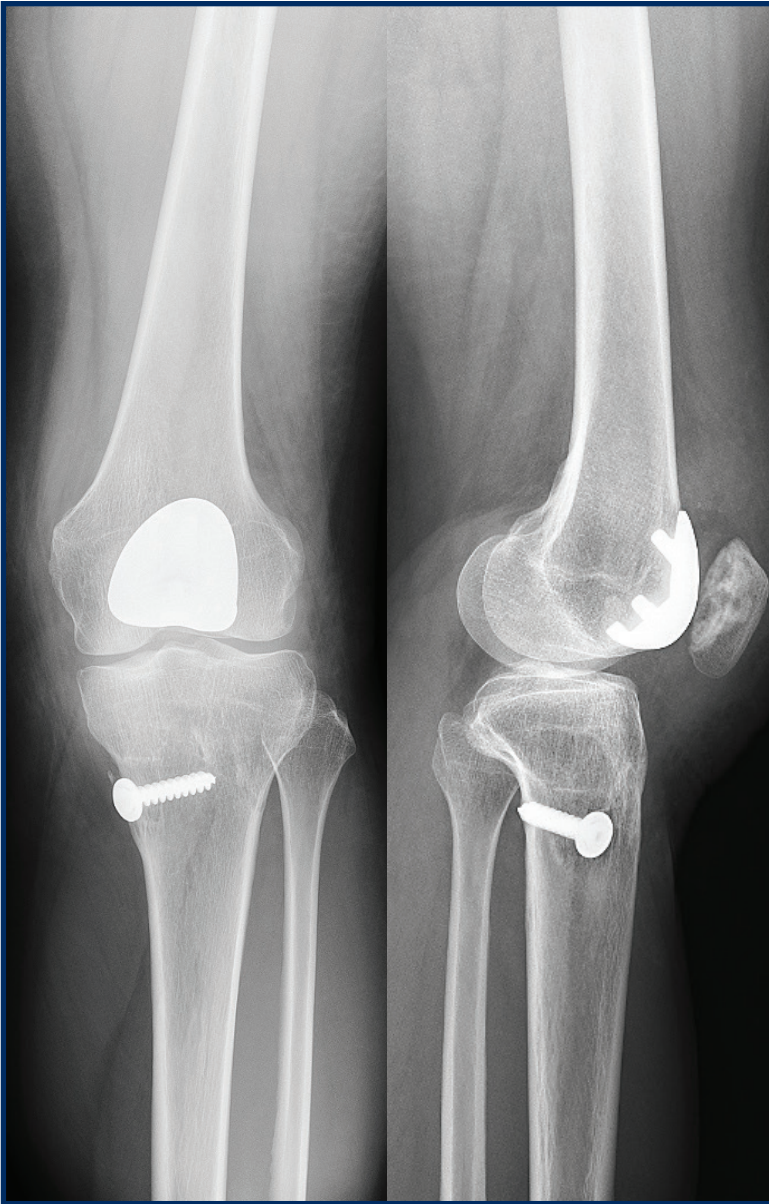
**Figure 1** – Preoperative radiograph demonstrating healed posteromedial tibial tubercle osteotomy sites.



**Figure 2** – Preoperative lateral radiograph of the left knee, demonstrating patella baja (Caton Deschamps ratio = 0.72).



**Figure 3** – Axial MRI depicting end-stage patellofemoral arthritis in the setting of trochlear dysplasia.



**Figure 4** – AP and lateral postoperative x-rays demonstrating left knee patellofemoral arthroplasty.