

FIGURE 1A

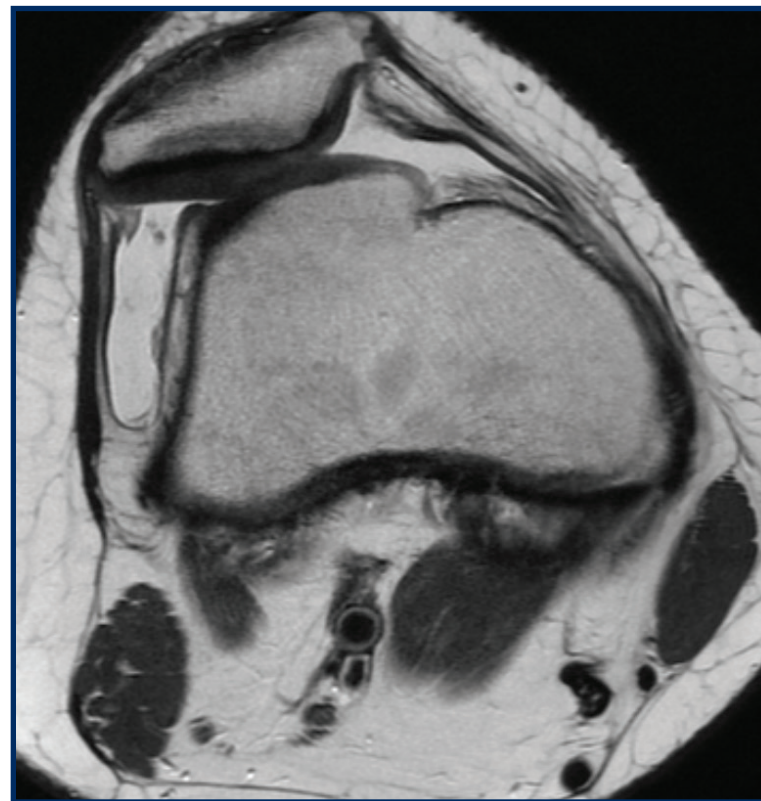


FIGURE 1B

Figure 1A and 1B – MRI depictions of patella alta (1A, Caton Deschamps ratio=1.34) and trochlear dysplasia (1B).

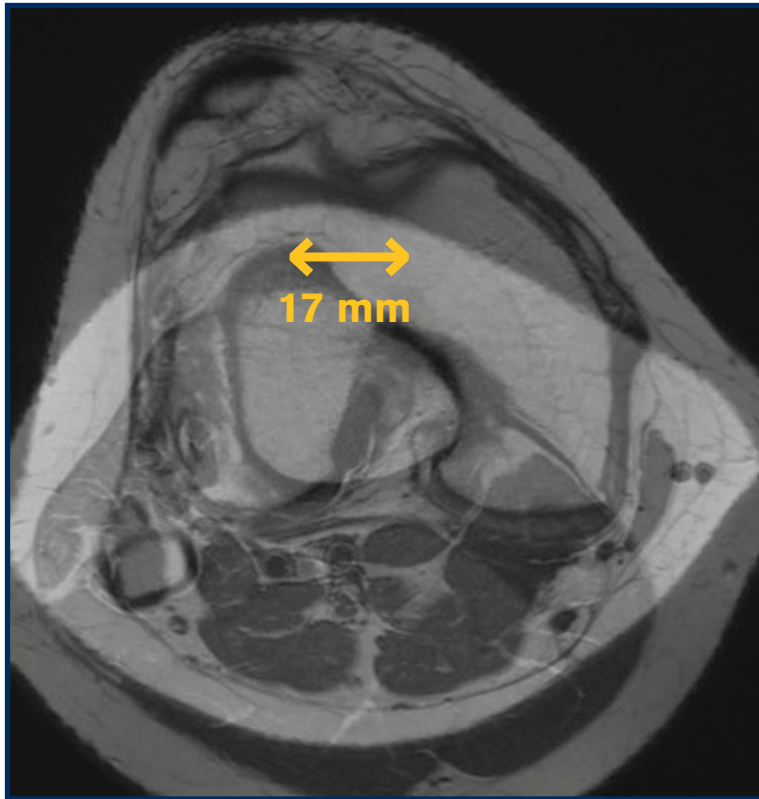


FIGURE 2A



FIGURE 2B

Figure 2A – Tibial tubercle-trochlear groove distance as measured on MRI.

Figure 2B – Central cartilage lesion on undersurface of right patella (arrow).

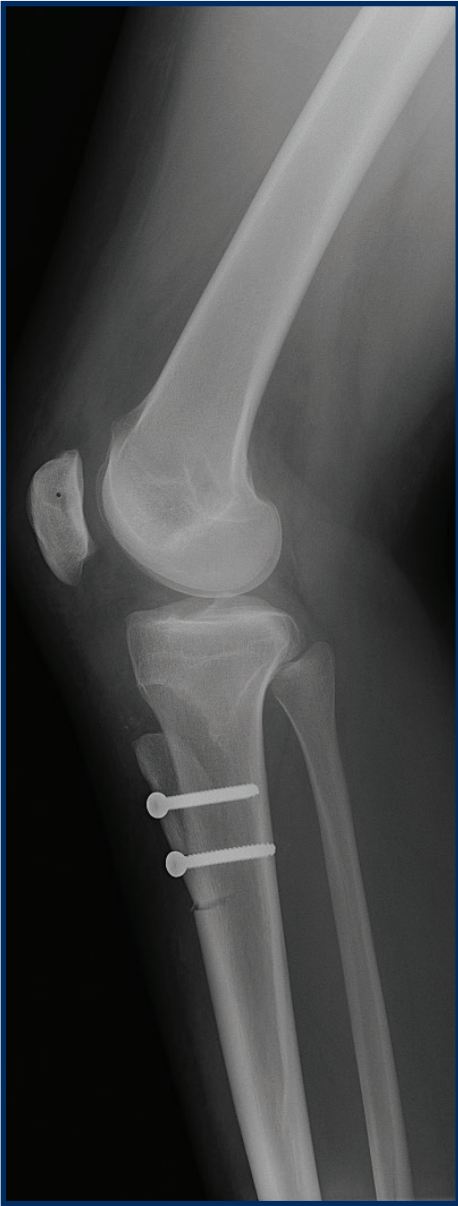


Figure 3 – Postoperative x-ray of right knee depicting tibial tubercle osteotomy and corrected patella alta.

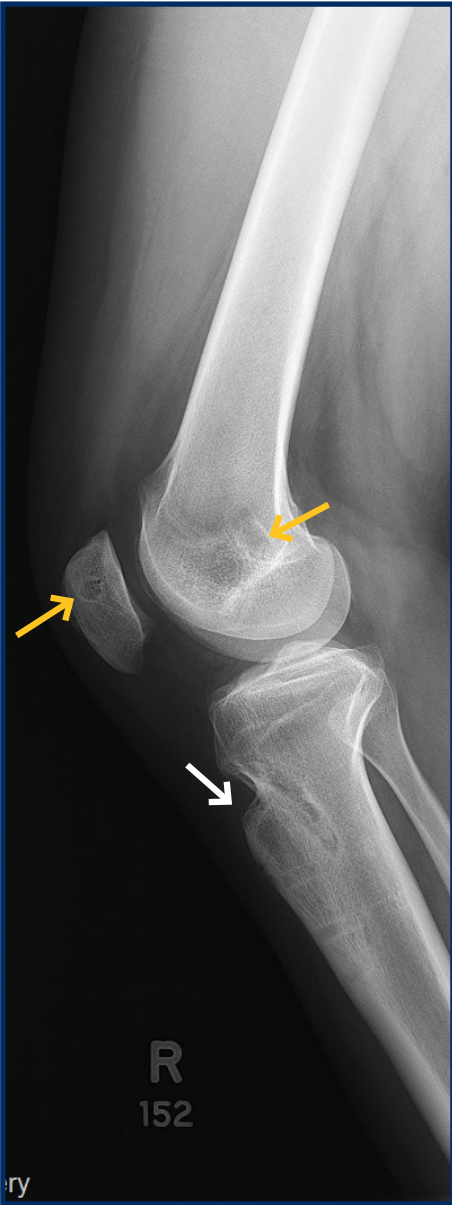


Figure 4 – Lateral view of the right knee depicting the patellar and femoral bone tunnels for MPFL reconstruction (yellow arrows) and the healed osteotomy site with evidence of distalization of the tibial tubercle (white arrow).