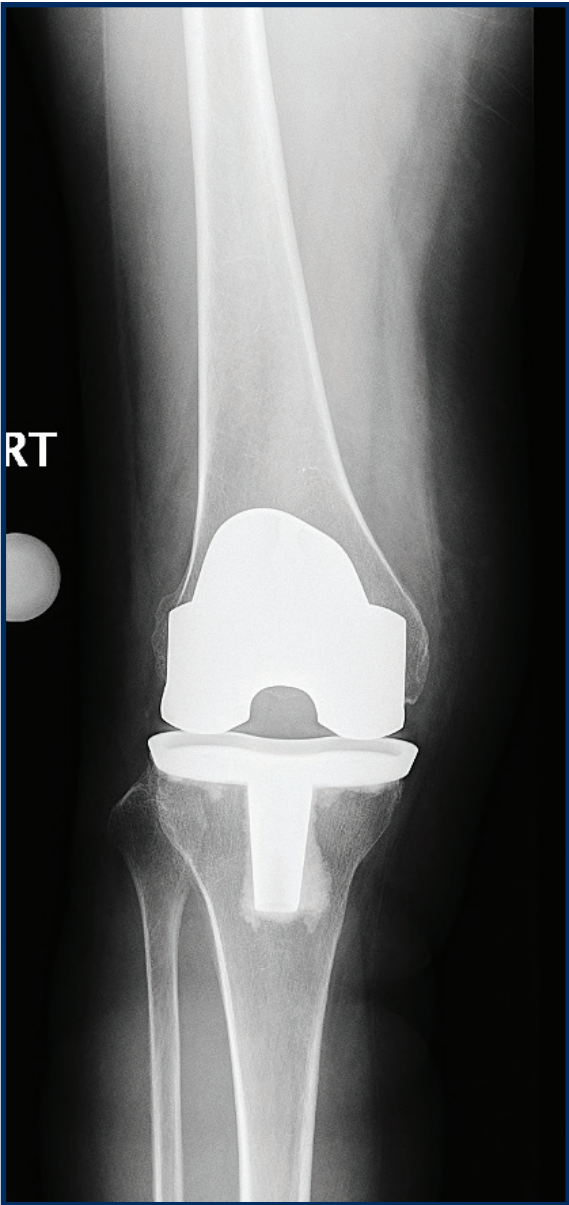
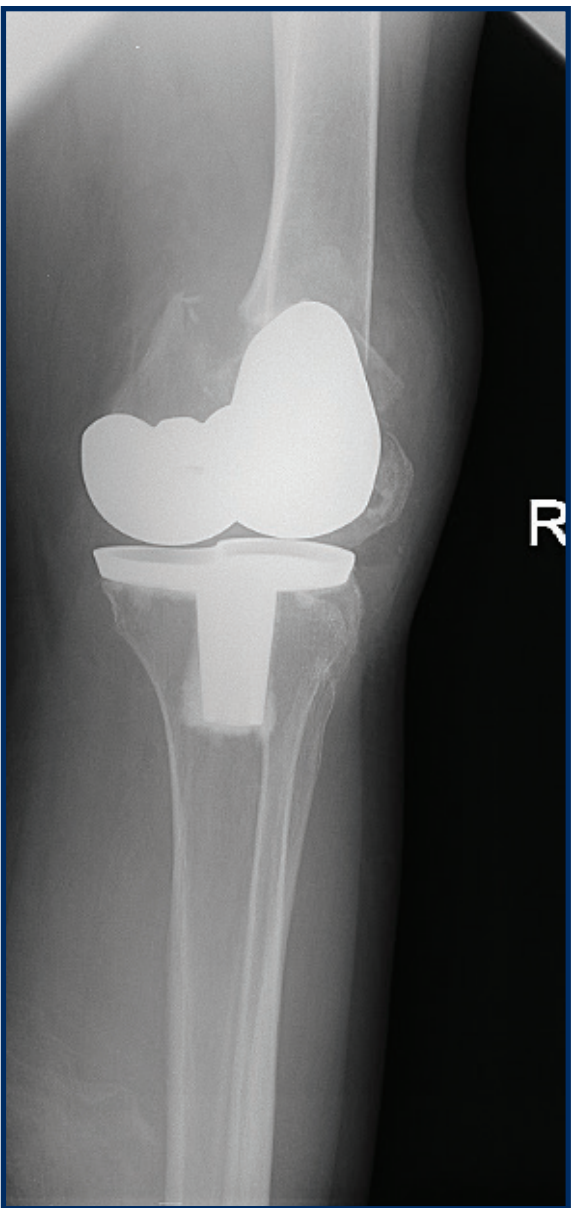




**Figure 1** – Pre-operative nonweight-bearing AP radiograph of the right knee, with valgus deformity and tricompartmental degenerative changes.



**Figure 2** – Post-operative AP radiograph of the right knee after posterior stabilized total knee replacement.



**Figure 3** – Radiograph four months after total knee replacement demonstrates a displaced supracondylar fracture at the level of the femoral prosthesis with considerable metaphyseal comminution.

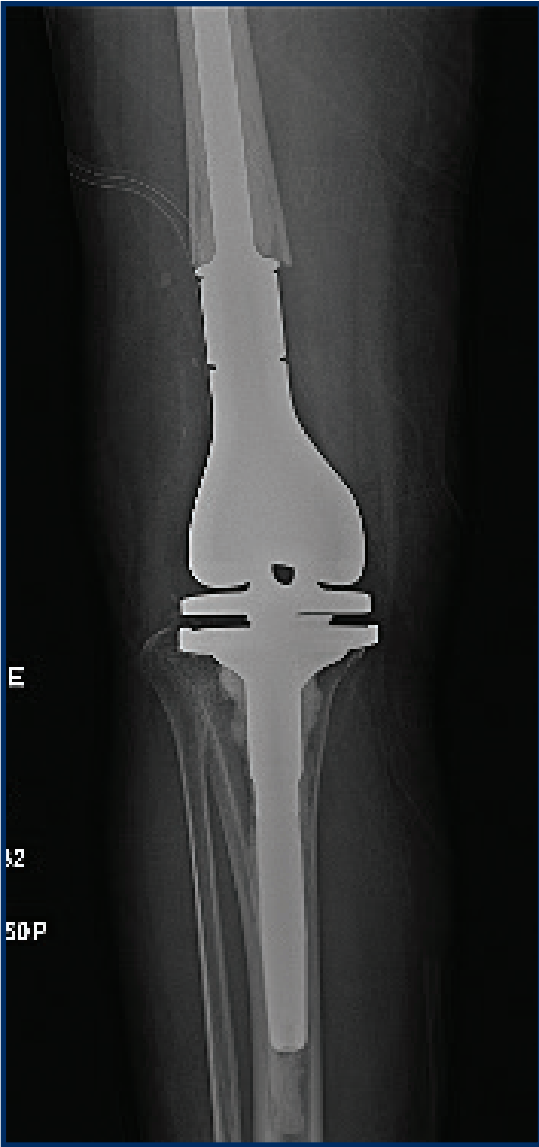


FIGURE 1A



FIGURE 1B

**Figures 4A and 4B –** AP (4A) and lateral (4B) radiographs demonstrate the modular, hinged distal femoral replacement with cemented intramedullary stems with restoration of the level of the natural joint line (4B).