



FIGURE 1A

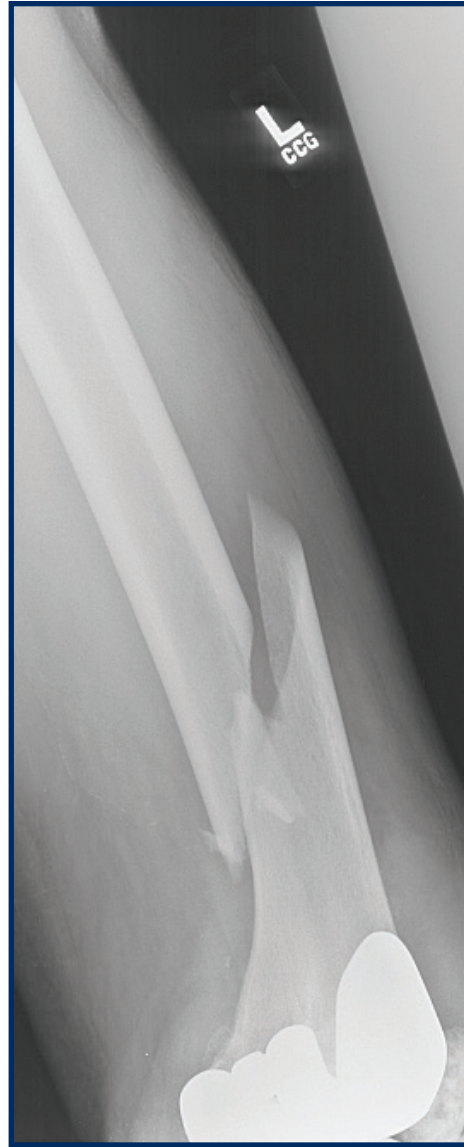


FIGURE 1B

Figures 1A and 1B –
Radiographs showing
displaced unstable
supracondylar fracture
above the total knee
prosthesis; (1A) AP view,
(1B) lateral view.



Figure 2 – Radiograph showing AP view after open reduction internal fixation of the supracondylar fracture using a 14 hole supracondylar locking plate.



Figure 3 – Radiograph, AP view, at 4 months after supracondylar locking plate fixation, showing abundant callus formation permitting full weight bearing.