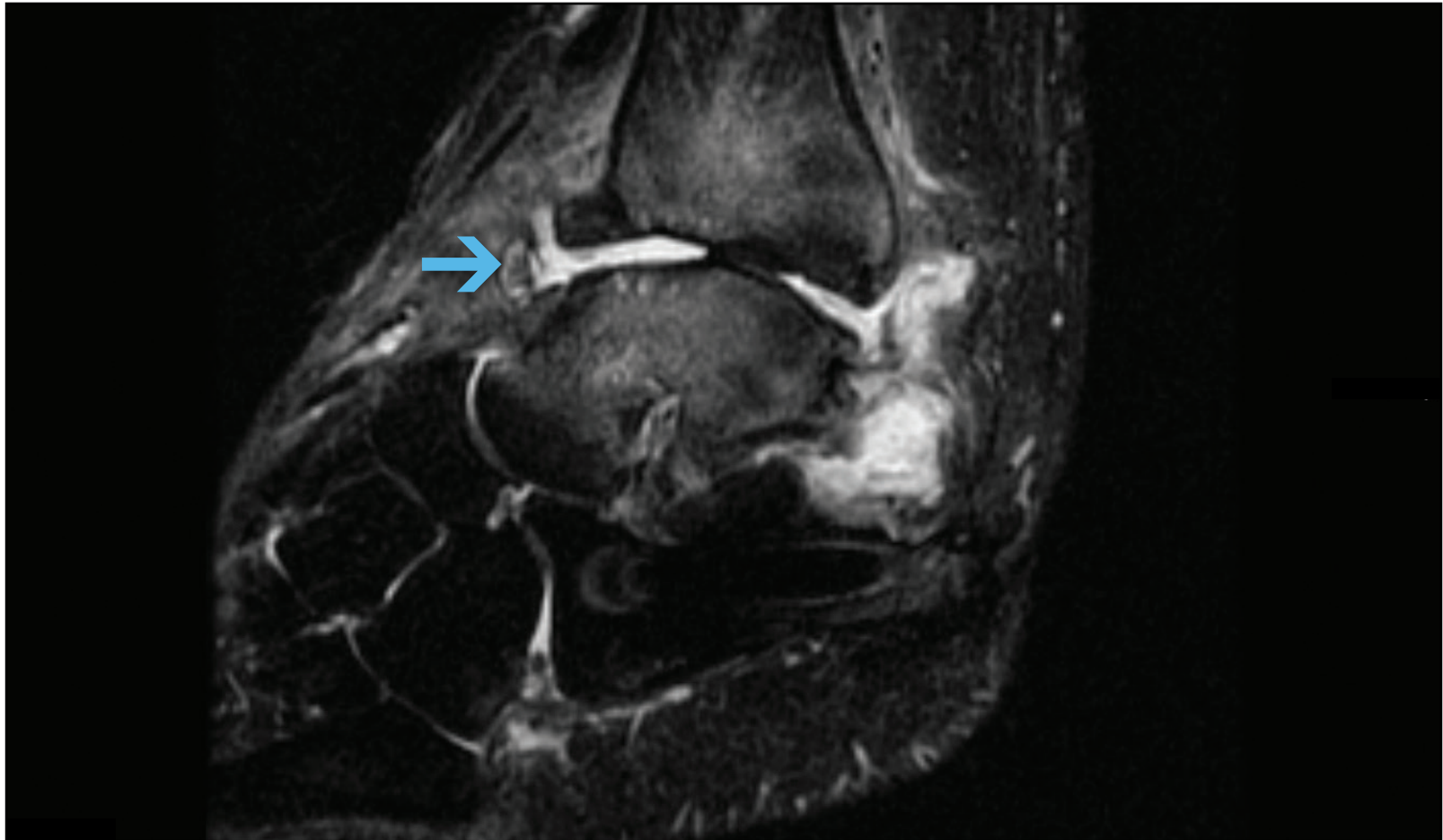
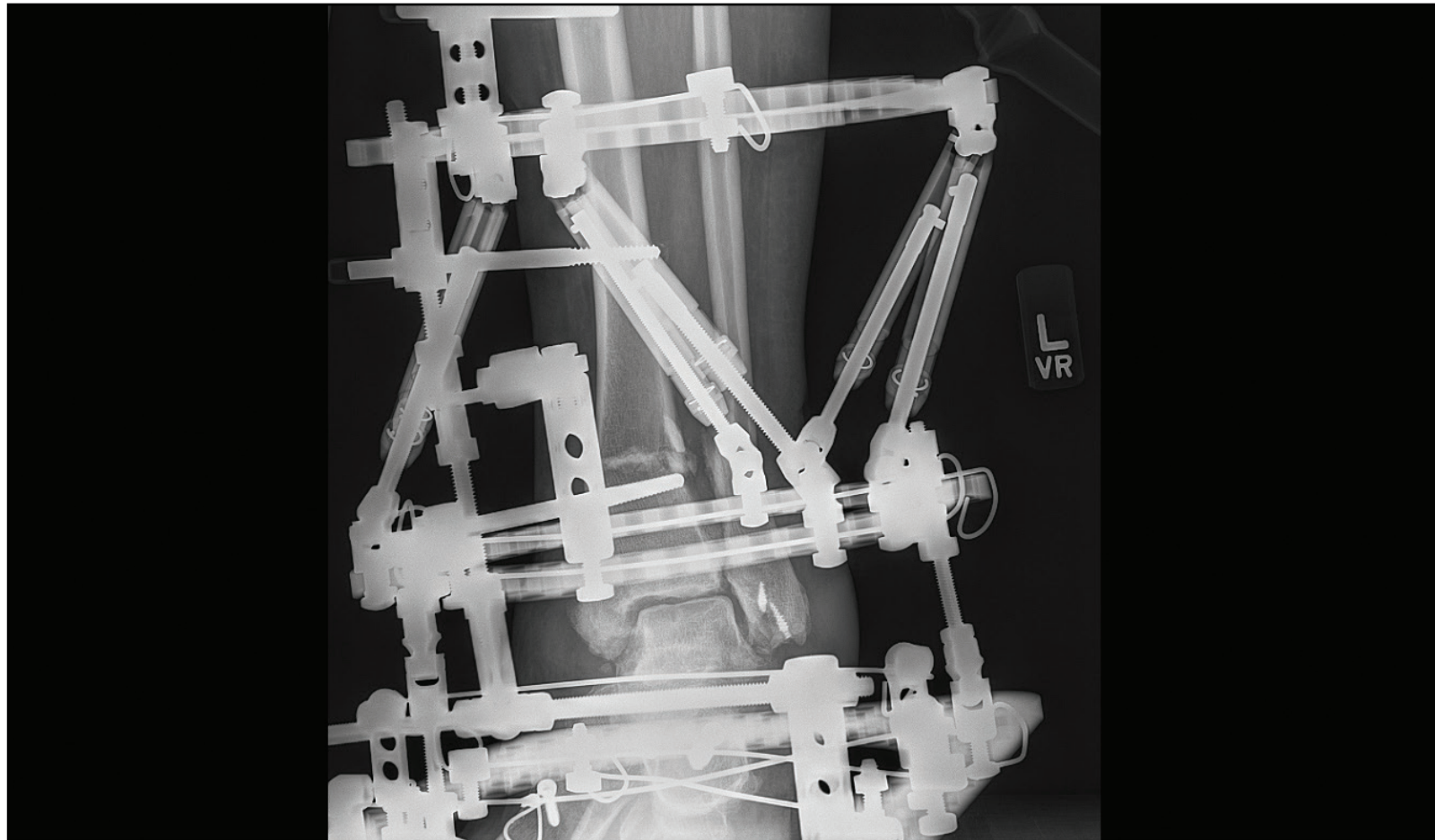


**Figure 1:** AP standing radiograph demonstrating a severe varus deformity of the ankle, narrowing of the joint space over the medial talar dome and hardware from the prior procedure.



**Figure 2:** Sagittal fat suppressed MRI demonstrating severe cartilage loss, subchondral edema and anterior ankle osteophytes. Arrow points to a large anterior osteophyte and corresponding ankle effusion.

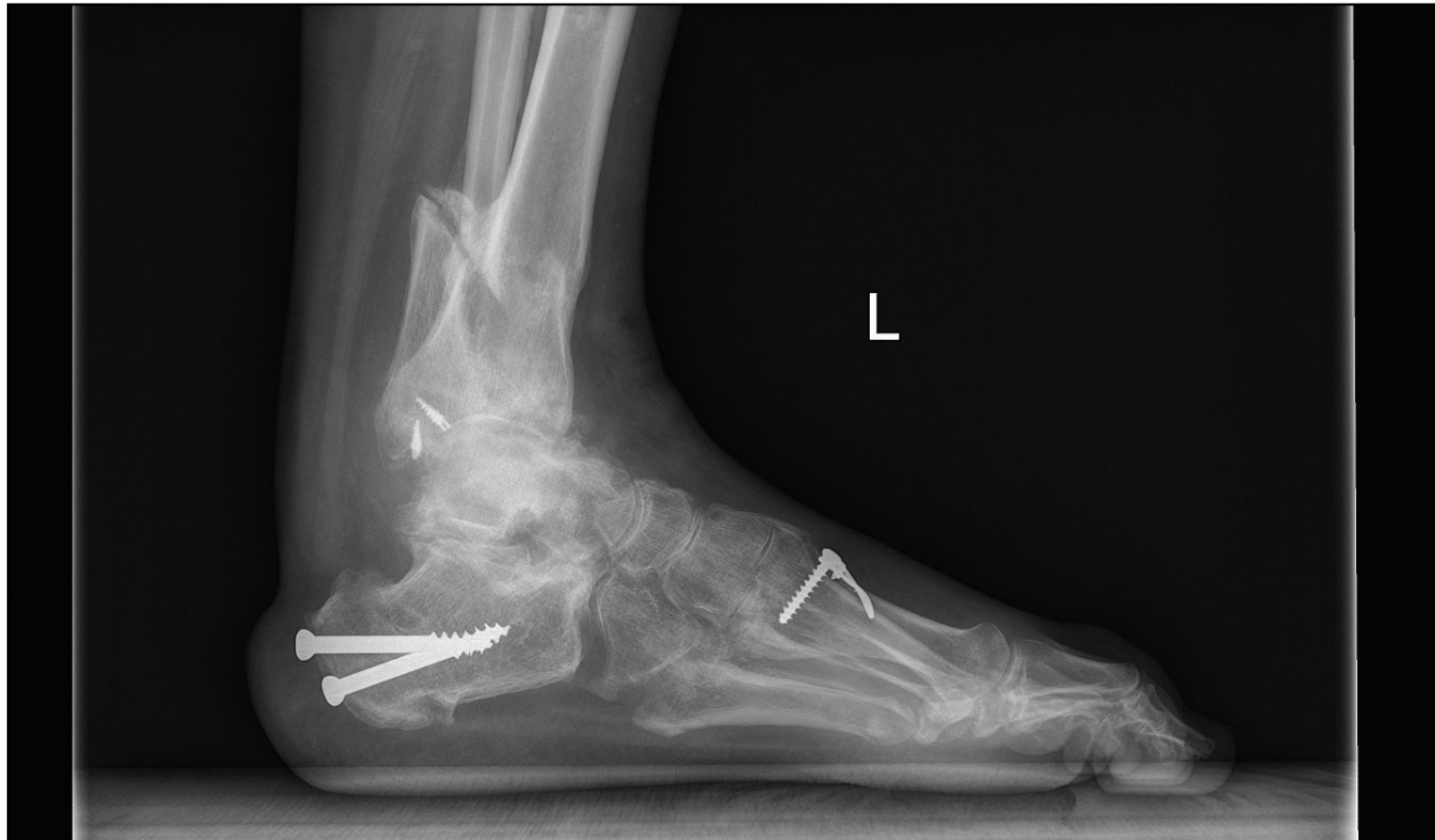


**Figure 3:** Mortise standing radiograph demonstrating the ankle status post supramalleolar osteotomy and distraction with the Taylor spatial frame in place.



**Figure 4:** AP standing radiograph demonstrating correction of the varus deformity of the ankle, improved medial joint space and a plantigrade foot.





**Figure 5:** Lateral standing radiograph demonstrating reduction of the calcaneal pitch, elimination of anterior osteophytes and plantigrade alignment.