

Figure 1: Initial X-rays from 2012 show severe flatfoot deformity: (A) greater than 50% uncoverage of the talar head is seen on the AP view; (B) the lateral view shows the plantarflexed talar head and subtalar joint subluxation.



Figure 2: Preoperative X-rays, following triple arthrodesis done at an outside institution, show minimal change in alignment.

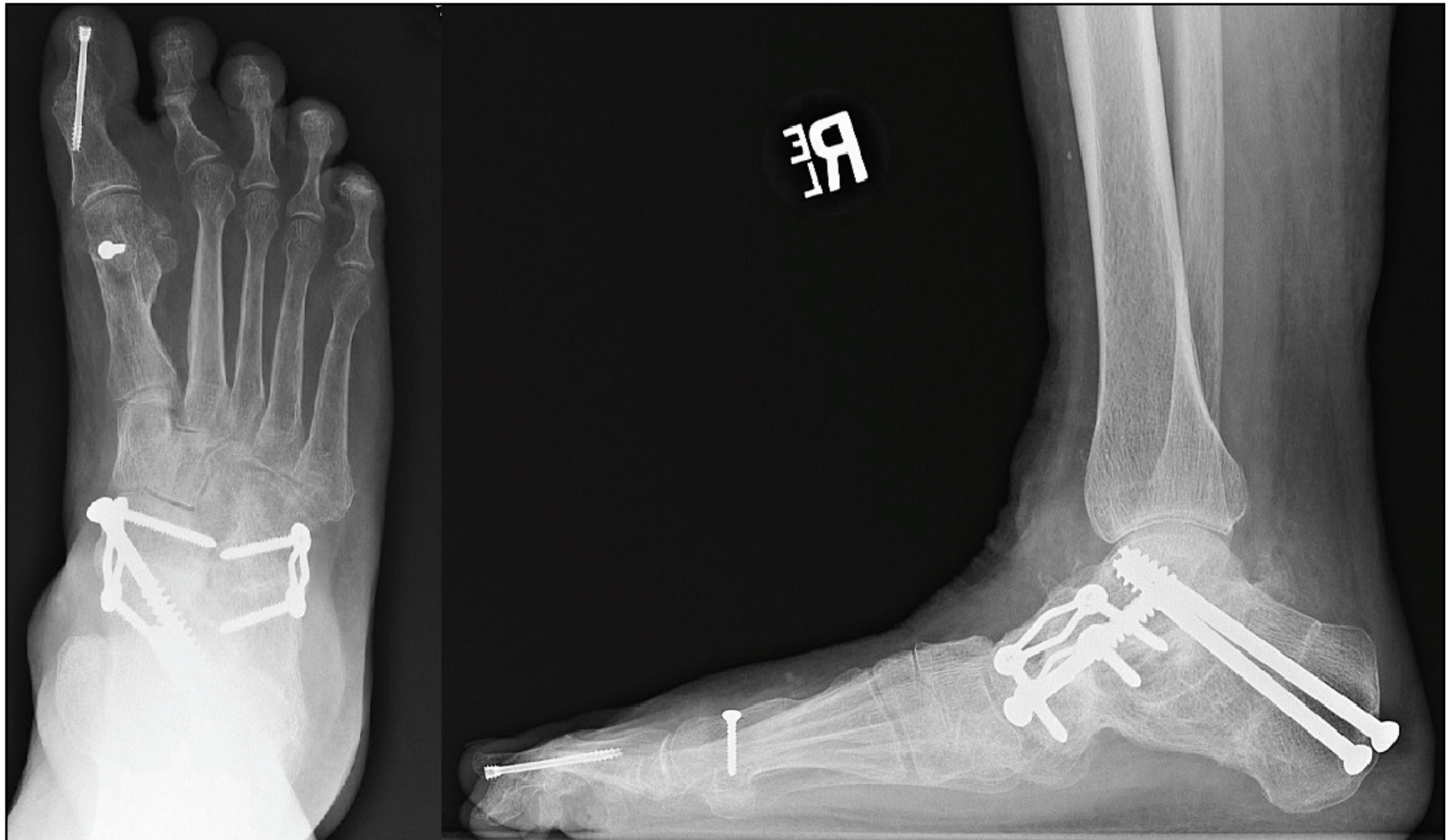


Figure 3: X-rays taken 6 months after revision surgery show healed fusion and osteotomy sites, with marked improvement in forefoot abduction. The ankle joint is well preserved.