

Figure 1 – Periodic acid Schiff stain showing an enlarged glomerulus with mild mesangial hypercellularity without significant endocapillary proliferation or major capillary wall abnormalities by light microscopy (40x).

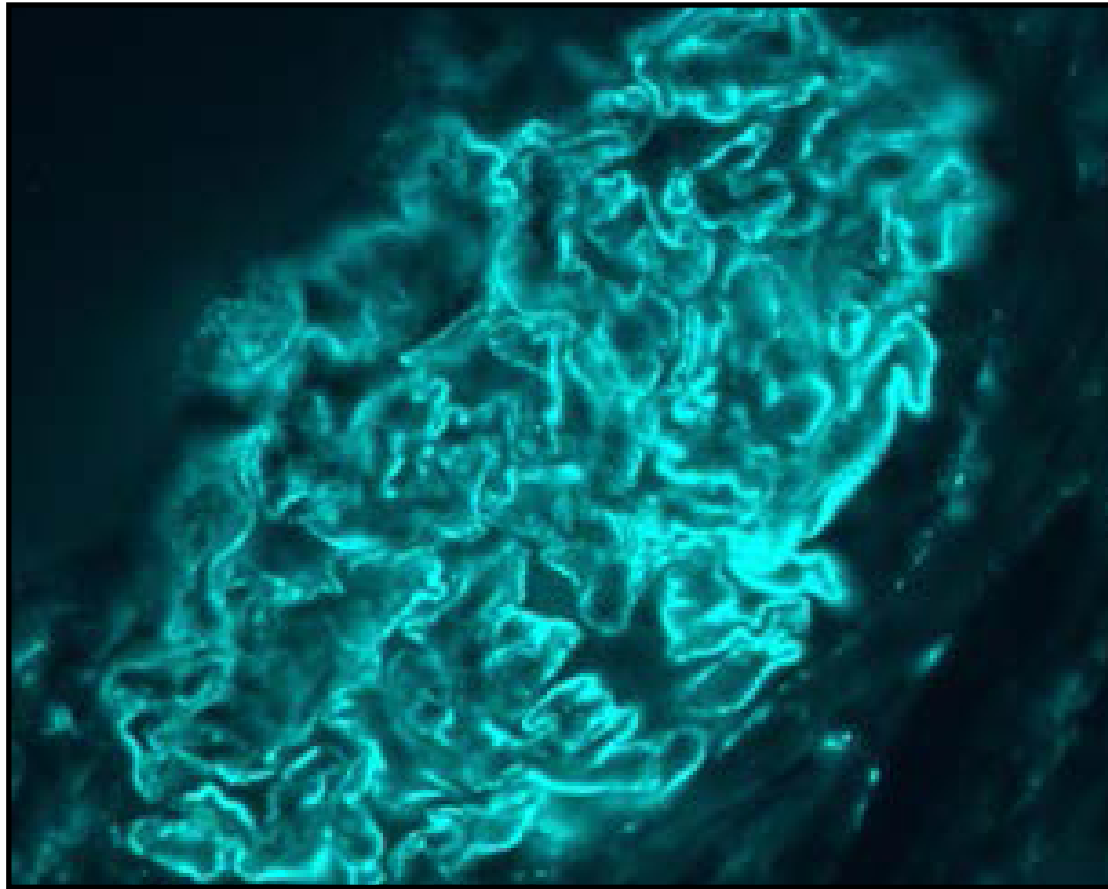


Figure 2 – C3
staining by
immunofluorescence
microscopy showing
global 3+ capillary wall
deposits (40x).

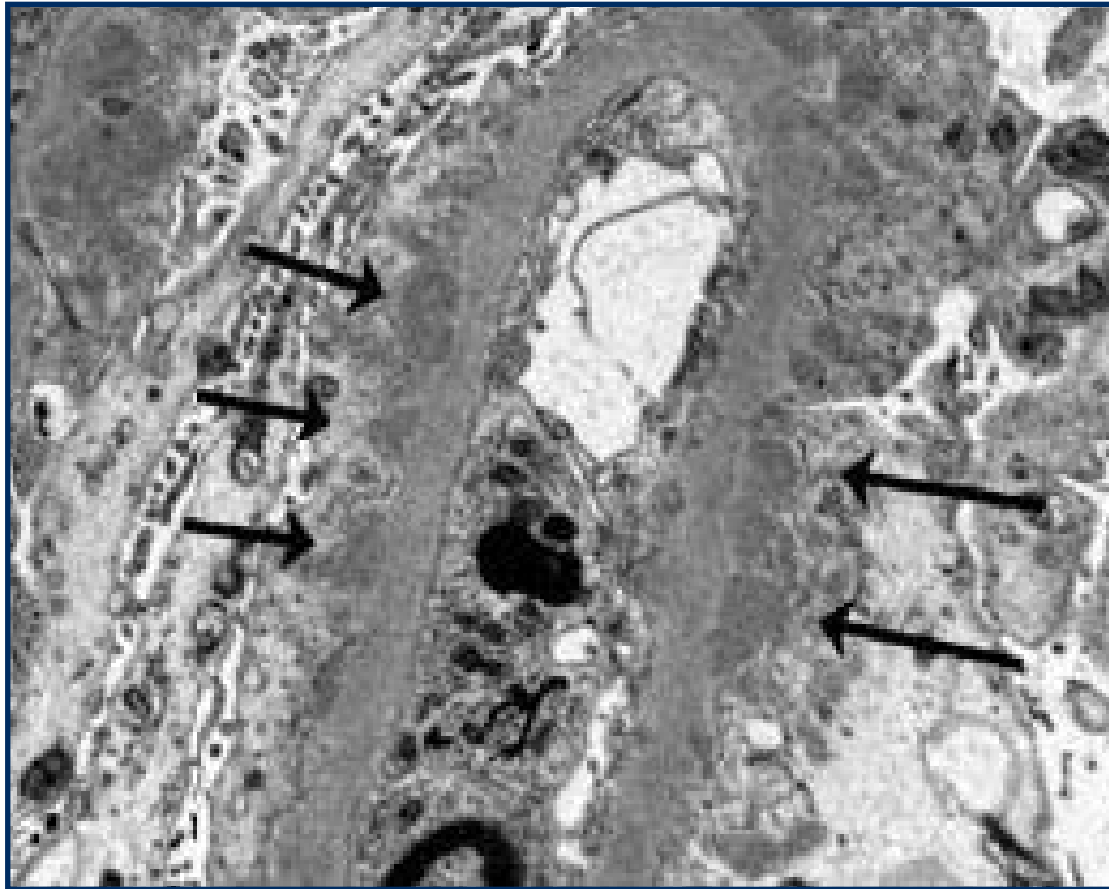


Figure 3 – Electron microscopy revealing global subepithelial electron dense deposits (arrows).

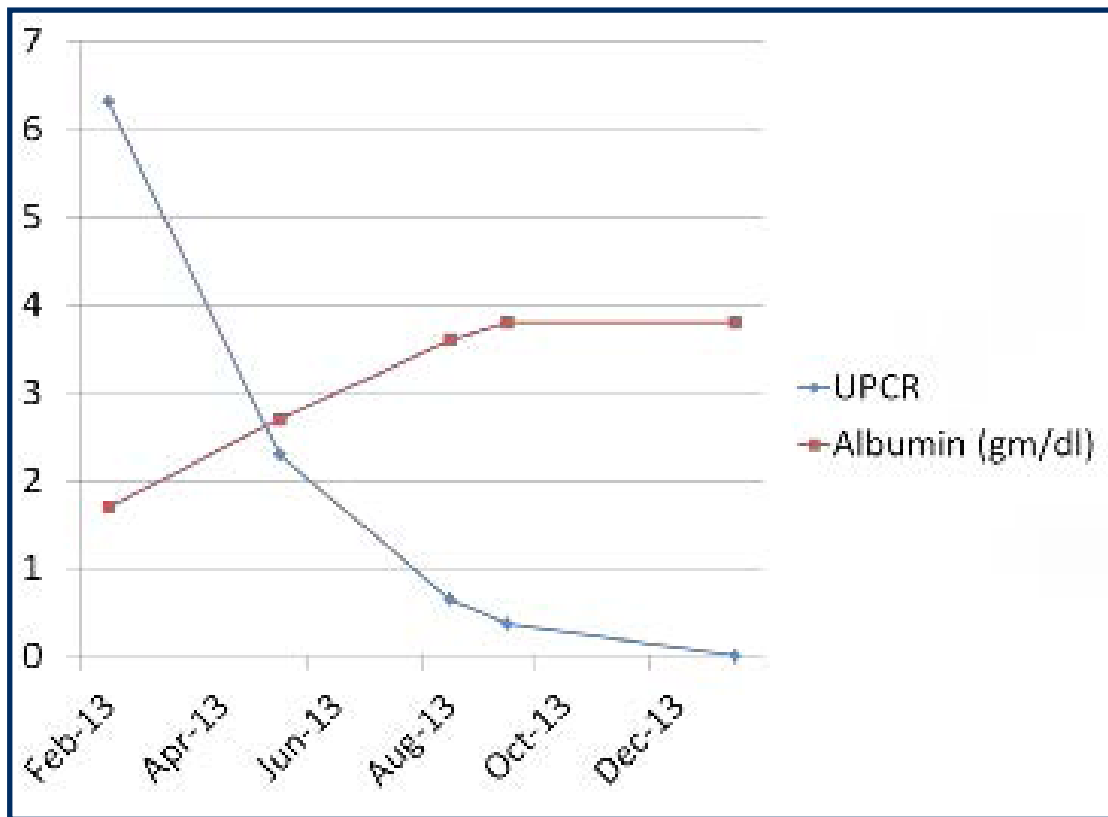


Figure 4 – Graphic representation of urine protein-creatinine ratio (UPCR in gm protein/gm creatinine) and serum albumin (in gm/dl) during induction treatment of lupus nephritis with GC, IVCY, and rituximab.