

# The Early RA Support and Education Program

## A *Free* Workshop Series for People with Early or Newly Diagnosed Rheumatoid Arthritis

**PRE-SCREENING AND REGISTRATION ARE REQUIRED FOR ATTENDANCE**

**\*COMMITMENT TO ATTEND ALL FOUR WORKSHOPS IS STRONGLY ENCOURAGED\***

### Fall 2011 Workshop Series

Wednesday, September 21, 2011

**An Overview of RA: Early Diagnosis and Treatment**

*Speaker: Theodore Fields, MD, Attending Physician, HSS;  
Professor of Clinical Medicine, Weill Cornell Medical College*



Wednesday, October 19, 2011

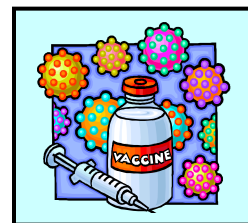
**RA and Nutrition: Myths and Realities**

*Speaker: Sotiria Everett, MS, RD, CDN, CSSD  
Clinical Nutritionist, HSS*

Wednesday, November 16, 2011

**RA and Infectious Diseases: Recommendations for Staying Well**

*Speaker: Barry Brause, MD, Attending Physician, Director of Infectious  
Diseases, HSS; Professor of Clinical Medicine, Weill Cornell Medical*



Wednesday, December 14, 2011

**Exercising with RA While Protecting Your Joints**

*Speaker: Karen Yanelli, PT, DPT  
Physical Therapist, HSS*

**Co-Facilitated by:**

**Kathryn Klingenstein, LMSW**

**Linda Leff, RN, BSN, BC**

**All workshops will be held from 5:00 to 7:00 PM in the  
Richard L. Menschel Education Center Conference Room A, 2<sup>nd</sup> floor  
Hospital for Special Surgery \* 535 East 70<sup>th</sup> Street \* New York, NY 10021**

**Please contact Kathryn Klingenstein for required pre-screening and registration at  
(212) 774-7378 or [klingensteink@hss.edu](mailto:klingensteink@hss.edu)**