

# Adult Flatfoot Correction

## **S. Robert Rozbruch, MD**

Chief, Limb Lengthening & Complex Reconstruction Service  
Professor of Clinical Orthopedic Surgery



LIMB .COM

The logo for Limb Lengthening.com features the word "LENGTHENING" in a blue, sans-serif font, enclosed within a black rectangular frame that has tick marks on all four sides, resembling a technical drawing or a measurement scale. The word "LIMB" is positioned to the left of the frame, and ".COM" is to the right.









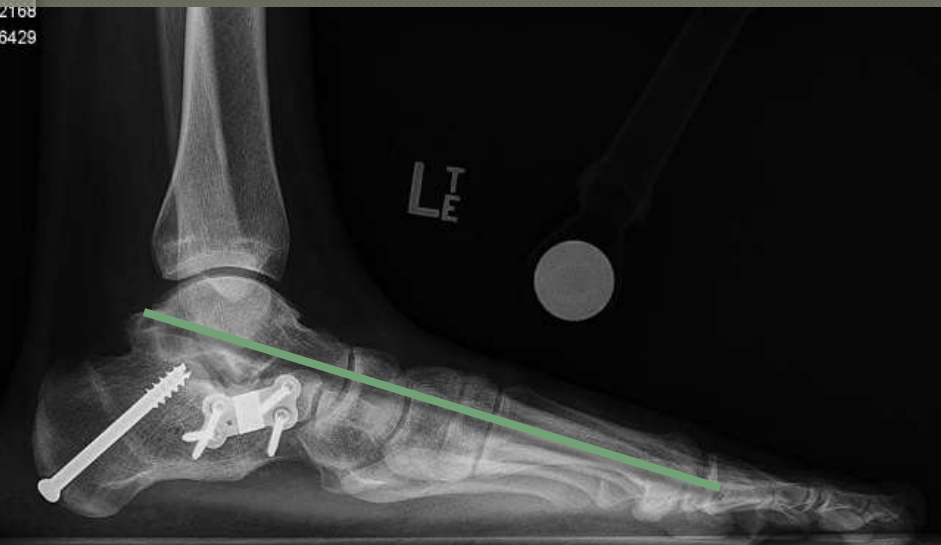


NICK,A



NICK





2108  
8429

306429













Acc#: 2966094









INE, M



INE, M



500



Acc#: 3141856

L  
DU



View: AP FOOT L





L  
OB

LETE LT  
|  
gery



L  
V  
R

VIEWS  
gery



L  
OB



L  
V  
R

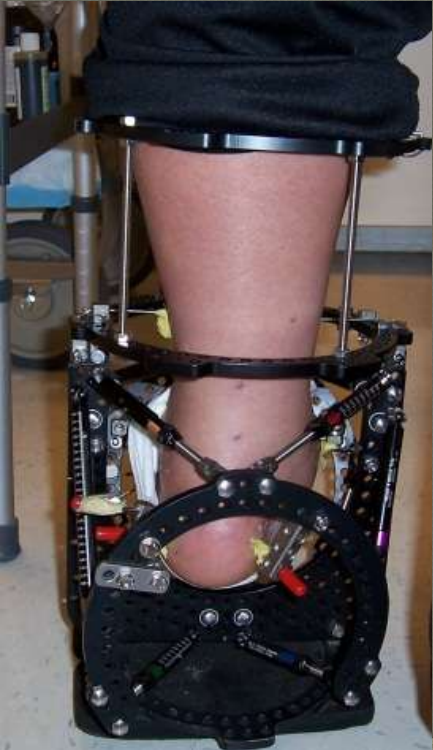
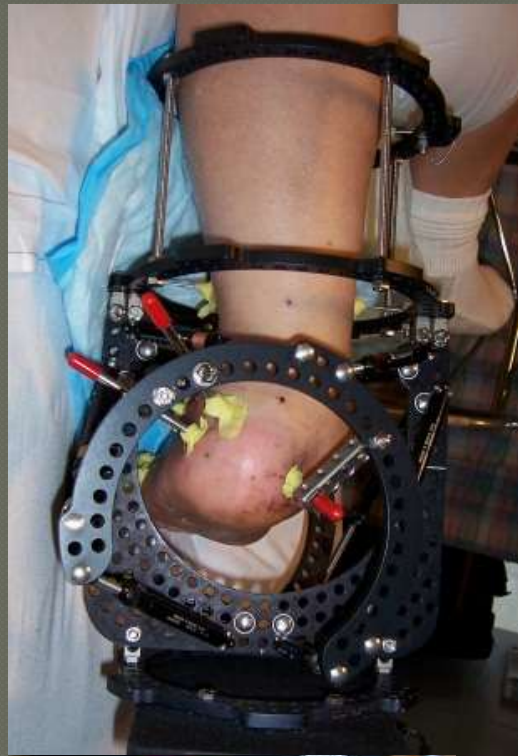


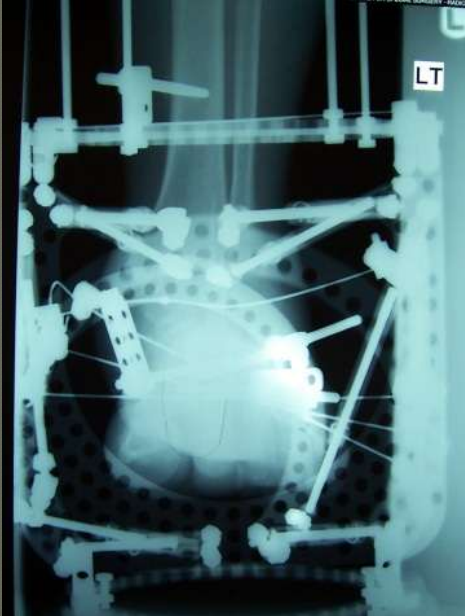
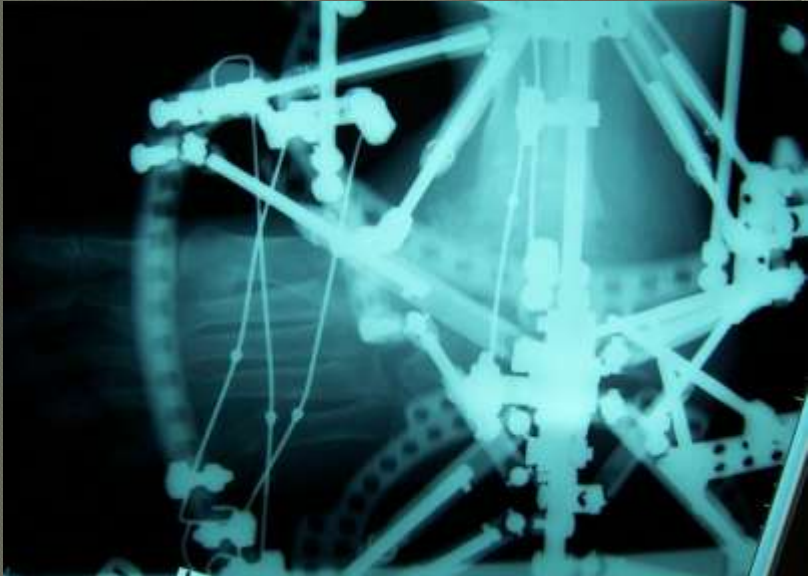
View: LAT FOOT L  
FOOT - L1-00-MODE VIEW

C: 204

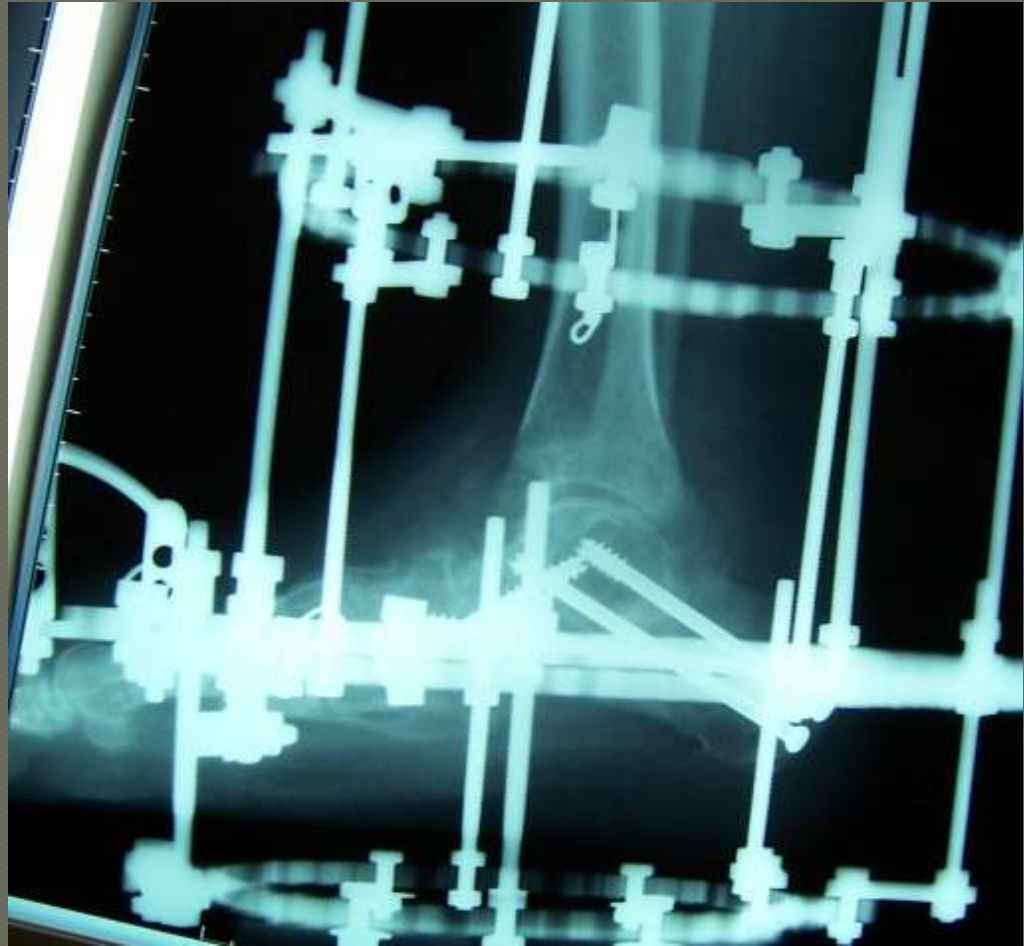














## pearls

- Calcaneal slide if no foot abduction
- **Look for & treat knee & ankle valgus**
- LCL + Calc slide. Preserve joint
- **PTT recon if tendon insufficient**
- Triple arthrodesis; LCL with CC fusion with arthritis
  - May need calc slide as well.
- **Indications for frame**
  - **Massive deformity**
  - **Staged internal fixation**

# Thank You



LIMB .COM

[www.hss.edu/limblengthening](http://www.hss.edu/limblengthening)